

GET IN TOUCH WITH ARTEOR™

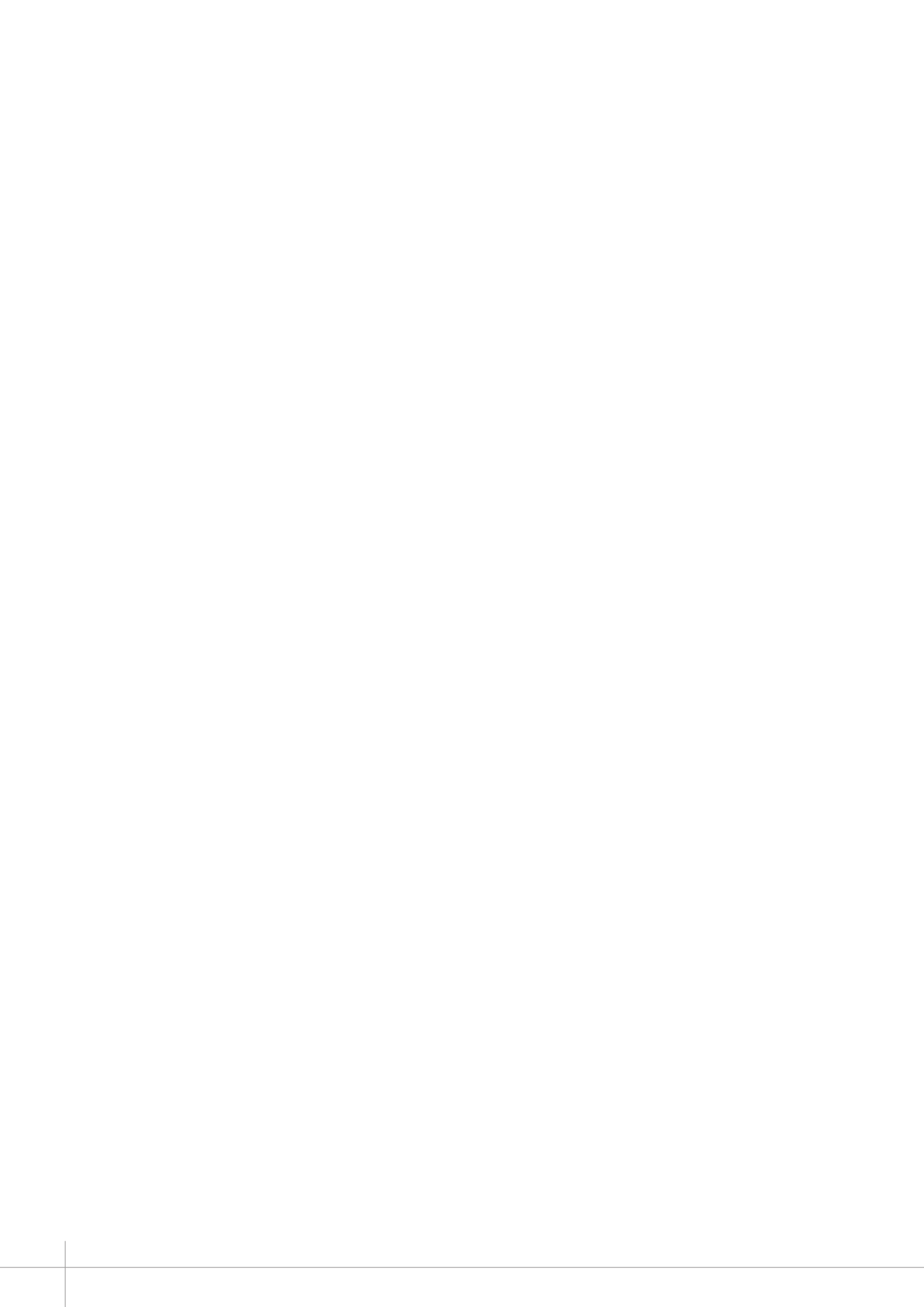
A WORLD OF NEW POSSIBILITIES

NOVEMBER 2023 EDITION



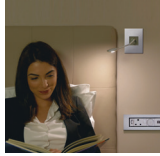



THE GLOBAL SPECIALIST
IN ELECTRICAL AND DIGITAL BUILDING INFRASTRUCTURES

 **legrand**®

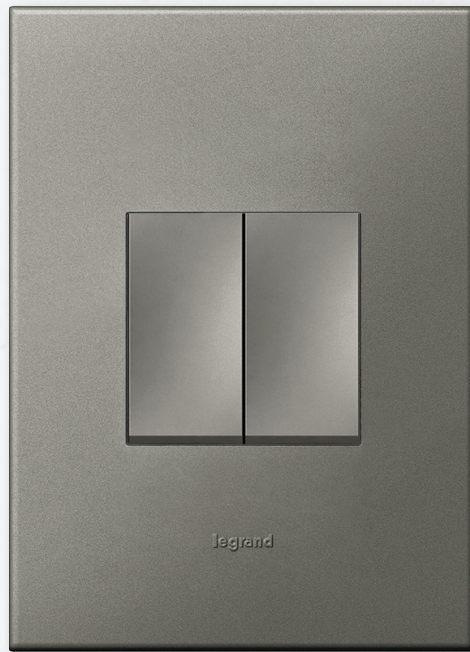


CONTENTS

4 - 8 ARTEOR'S 17 FINISHES		NEUTRAL FINISHES A WIDER CHOICE OF METALS ARTEOR™ ON TREND	04 06 08
10 -11 NEW ARTEOR™ FUNCTIONS		USB CHARGERS FOR THE HOME	10
12 -15 NEW ARTEOR™ FUNCTIONS		WIRELESS CHARGERS AND LIGHTING SOLUTIONS	12 14
16 -49 CATALOGUE PAGES		ARTEOR WIRING DEVICES	16

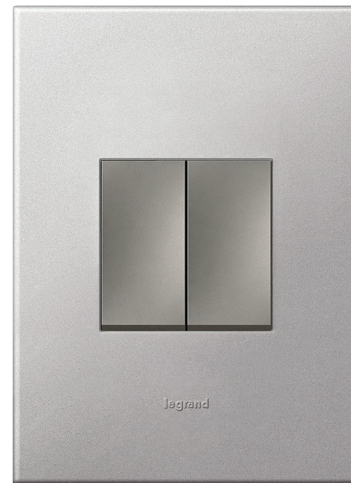
T I M E L E S S H A R M O N Y

N E W N E U T R A L F I N I S H E S





CHAMPAGNE



SOFT ALU



WHITE

NEUTRAL FULL COLOUR

This neutral and minimalist collection leaves plenty of room for contemporary design concepts. An extended colour range with new plate and mechanism colours gives designers even greater freedom.



MAGNESIUM

NEW COMBINATIONS

Arteor meets customisation requirements by offering more ways to combine colours. But the more technology shapes our lives, the more we want it to blend in discreetly with our individual environments. This is why clean lines and a pared-down look define the design philosophy of the range.



DARK BRONZE



GRAPHITE

STRONG IMPACT

A WIDER CHOICE OF METALS



REFLECTIVE METAL

A new collection made of metal finishes provides a suitably brilliant solution for more demanding projects. Elegantly discreet despite their mirror finish, these switches blend seamlessly into their environment. Available in gold and other colours, they give a definite nod to the technology involved.

Opposite Page - Reflective Metal Black



STAINLESS STEEL



GOLD

BRUSHED METAL

Two further colours have been added to this relatively neutral but prestigious collection of brushed metal finishes. "Pink Champagne" (a warm, reddish brown) and "Black" offer designers a wider choice for high-end applications.



PINK CHAMPAGNE



STAINLESS STEEL



BLACK

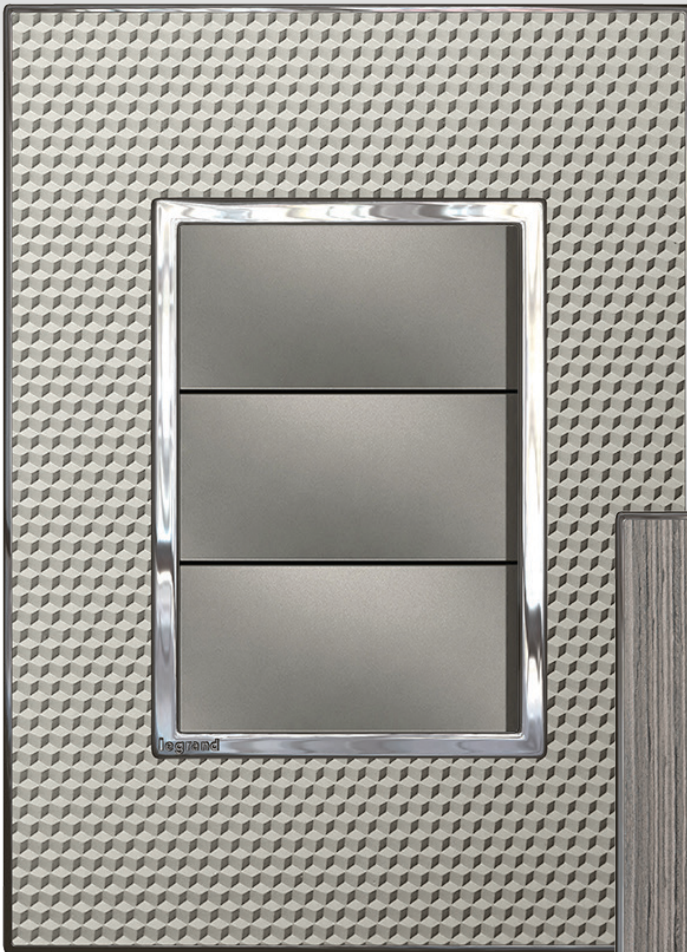


GOLD BRASS



OUT OF THE BOX

ARTEOR™ ON TREND



CUBE

In the Wood collection, nature and technology combine to create an original, appealing finish. The unique texture of Signature Cube turns this extraordinary finish into a sophisticated modern design element and creates a unique combination of look and feel.




GREY OAK

Both collections create an impression of discretion and technical sophistication. Chromed metal accents reinforce the image of a prestigious product. A bevelled profile ensures an on-trend slimline look.

KEEP IN TOUCH

NEW ARTEOR™ FUNCTIONS

A woman with long dark hair, wearing a white button-down shirt, is smiling warmly. She is holding a young child with light brown hair and blue eyes. The child is looking intently at a black smartphone held in the woman's hand. The woman's hands are visible, supporting the child. The background is a soft, out-of-focus indoor setting.

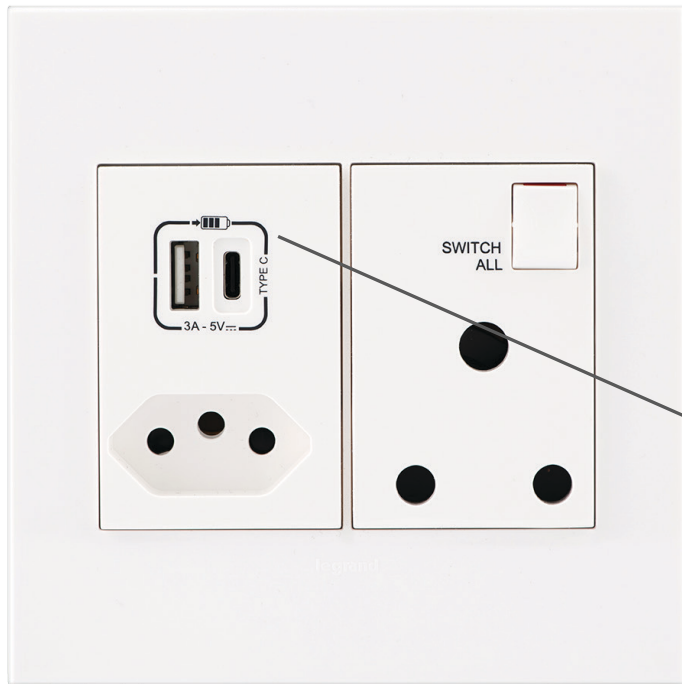
You have to be connected to get on. This is why options to charge mobile devices, wherever you may be, are so essential these days. Arteor offers chargers in various versions for this very reason, whether you're out and about, at home, in a hotel, or at the office. USB chargers or wireless chargers – they both allow to keep your mobile devices charged and running, anywhere and any time.

A L W A Y S F U L L P O W E R

USB CHARGERS FOR THE HOME

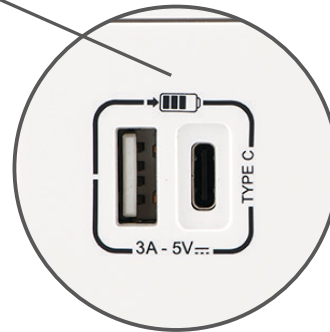


Conveniently placed USB chargers at home allow you to charge your mobile devices easily wherever it's handy: near the entrance, by the bedside or in the kitchen... Arteor has a suitable solution for every kind of mobile device – including, of course for the new generation with USB C-Type connection.



THE NEW 16A RSA SOCKET OUTLET WITH USB CHARGER

Featuring both the **old and new RSA 2P+E sockets** as well as **USB A-type and C-type sockets**, our new monobloc provides convenience and efficiency.



13 A BS SOCKET OUTLET WITH USB A-TYPE CHARGER

USB CHARGER

These modular charging sockets with a C-Type USB charging port comply with IEC 62684-2011-1. Aesthetically pleasant, they can be used to charge any mobile device, both at work and at home.

USB A-TYPE AND C-TYPE CONNECTIVITY

More and more mobile devices are equipped with the new C-Type USB. With Arteor, you are ready for this development today: the new Arteor monoblocs are equipped with two different USB charging ports, A-Type and C-Type 3 A – 5 V = 15 W.



USB C POWER DELIVERY WITH SMART ON/OFF FOR BATTERY



COMPACT POWER 15W WITH UP TO 2 PORTS IN ONE MODULE

WHEREVER YOU ARE

WIRELESS CHARGERS

Use at work and on the move requires a different set of features, with adaptability and robustness top of the list. With their pleasing aesthetics, Arteor chargers are even more universally suitable.



WIRELESS CHARGER + A-TYPE USB

This Arteor wireless charger features an additional A-Type USB port for simultaneous charging of two devices – a smartphone with a Qi receiver via induction and a tablet via the USB port. To be mounted on the wall, installed in a cable column, or as part of a multi-outlet extension in the office or at home (e.g. in the kitchen).



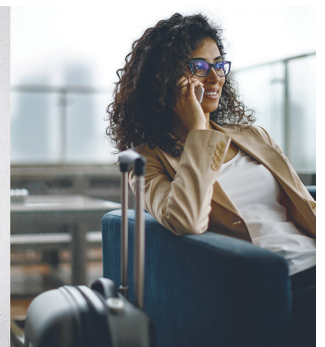
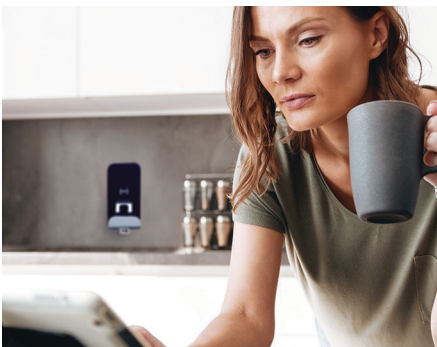
QI WIRELESS CHARGER FOR INTEGRATION INTO FURNITURE

The Qi wireless charger comes with an extra-slim design for integration into furniture, e.g. in meeting rooms, offices or public spaces. Also suitable for kitchen worktops at home. Supplied with external 110 – 240 V universal power supply. Plugs comply with European, BS, US and Australian/Chinese standards.




FLUSH-MOUNTED WIRELESS CHARGER FOR PUBLIC AREAS

IK 08 – IP 66, impact-resistant and weatherproof design, specifically created for public areas such as restaurants, waiting rooms, libraries, passageways or transit areas, and even swimming pools.



Wireless Power Consortium: 750 members, ensuring interoperability with induction-compatible phones.

Qi: global standard adopted by vehicle manufacturers/cafés/restaurants/hotels

 Legrand is member of the Wireless Power Consortium. Legrand wireless chargers are conform to the Qi WPC standard.

THE RIGHT M O O D

ARTEOR™ LIGHTING SOLUTIONS

Light creates atmosphere, emphasizes room features and helps overcome emergencies. Arteor solutions provide bright prospects for developers and decorators who want to make a very deliberate use of lighting in their projects.



UNIVERSAL PUSH-BUTTON DIMMER FOR ALL TYPES OF LAMPS

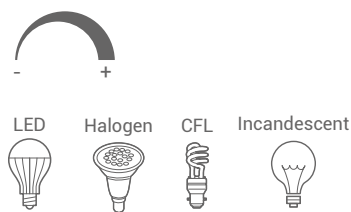
With the Universal dimmer for all modern loads including dimmable CFLs and LEDs Arteor makes it easy to create individual lighting moods.

Convenient to use:

33% and 66% luminance are preset, and there is a level memory function too. The night light function with its slow dimming feature is a practical solution for bedrooms or children's rooms.

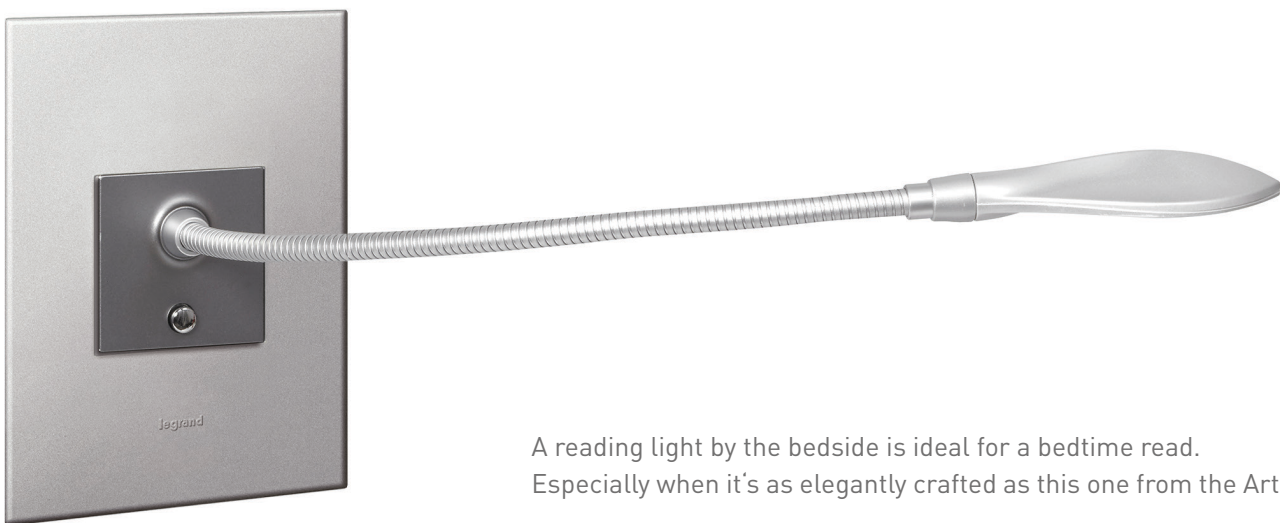
Easy installation:

Two cables are enough as a neutral wire is not required
 – ideal for renovations or installation work carried out at a later time.



READING LIGHT AND REMOVABLE TORCH

Having just the right light for every situation is not just handy, but also deeply reassuring. Arteor provides this security through specific solutions that fit harmoniously with the overall design of the installation while bringing users genuine added value.



A reading light by the bedside is ideal for a bedtime read. Especially when it's as elegantly crafted as this one from the Arteor range.

This compact battery lamp is both an emergency light and a torch at once. It comes on automatically in the event of a power cut and can easily be unplugged from its holder for handheld use.





ARTEOR WIRING ACCESSORIES

ARTEOR™ WIRING ACCESSORIES



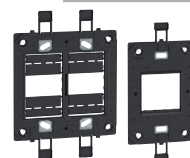
P. 18
Mechanical
switches,
push-buttons



P. 26 **N**
USB chargers



P. 34
RJ 45 sockets



P. 39
Support frames





P. 20 **N**
Contactless switches,
motion sensors



P. 21 **N**
Dimmers



P. 23
Visual indication



P. 24
Heating, ventilation
& roller blinds
control



P. 28
Lighting control,
emergency
push-buttons



P. 30
International
socket outlets



P. 31
South African
standard
socket outlets



P. 32
Telephone and
television sockets



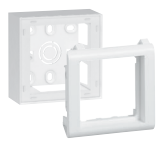
P. 36
USB data sockets



P. 38
Audio and
video sockets



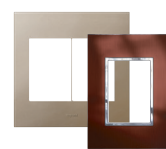
P. 40
Ancillary mechanisms
and blanking cover
plates



P. 41
Mounting supports
and mounting boxes



P. 44
Hotel equipment
(stand-alone)



P. 48
Plate selection charts



Arteor™ mechanical switches

square version



Support frame and plate selection charts p. 48-49

Mechanisms supplied with rocker plates, to be equipped with support frames (p. 39) and plates (p. 48-49)

Pack	Cat.Nos	Switches 10 AX - 250 V~	Pack	Cat.Nos	Switches 20 AX - 250 V~
10	5 720 04	1-way switch ○ White - 1 module	10	5 720 09	1-way switch ○ White - 1 module
10	5 725 04	● Magnesium - 1 module	10	5 725 09	● Magnesium - 1 module
10	5 700 04	● Champagne - 1 module	10	5 700 09	● Champagne - 1 module
10	5 710 04	● Soft Alu - 1 module	10	5 710 09	● Soft Alu - 1 module
10	5 724 50	● Red - 1 module	10	5 720 41	○ White - 2 modules
10	5 720 34	○ White - 2 modules	10	5 725 41	● Magnesium - 2 modules
10	5 725 34	● Magnesium - 2 modules	10	5 723 81	● Champagne - 2 modules
10	5 700 34	● Champagne - 2 modules	10	5 723 80	● Soft Alu - 2 modules
10	5 710 34	● Soft Alu - 2 modules	10	5 720 10	2-way switch ○ White - 1 module
10	5 720 05	2-way switch ○ White - 1 module	10	5 725 10	● Magnesium - 1 module
10	5 725 05	● Magnesium - 1 module	10	5 700 10	● Champagne - 1 module
10	5 700 05	● Champagne - 1 module	10	5 710 10	● Soft Alu - 1 module
10	5 710 05	● Soft Alu - 1 module	10	5 720 11	2-way switch with indicator To be equipped with LED (p. 565) ○ White - 1 module
10	5 720 35	○ White - 2 modules	5	5 725 11	● Magnesium - 1 module
10	5 725 35	● Magnesium - 2 modules	5	5 723 83	● Champagne - 1 module
10	5 700 35	● Champagne - 2 modules	5	5 723 82	● Soft Alu - 1 module
10	5 710 35	● Soft Alu - 2 modules	10	5 720 42	○ White - 2 modules
10	5 720 06	2-way switch with indicator To be equipped with LED (p. 565) ○ White - 1 module	5	5 725 42	● Magnesium - 2 modules
10	5 725 06	● Magnesium - 1 module	5	5 723 85	● Champagne - 2 modules
10	5 721 75	● Champagne - 1 module	5	5 723 84	● Soft Alu - 2 modules
10	5 721 74	● Soft Alu - 1 module	10	5 720 43	1-way switch - 3-gang ○ White - 2 modules
5	5 720 36	○ White - 2 modules	10	5 725 43	● Magnesium - 2 modules
5	5 725 36	● Magnesium - 2 modules	10	5 723 87	● Champagne - 2 modules
5	5 721 77	● Champagne - 2 modules	10	5 723 86	● Soft Alu - 2 modules
5	5 721 76	● Soft Alu - 2 modules	10	5 720 44	2 x 2-way switch + 1-way switch - 3-gang ○ White - 2 modules
5	5 720 37	2-way switch with indicator and label-holder To be equipped with LED (p. 565) ○ White - 2 modules	10	5 725 44	● Magnesium - 2 modules
5	5 725 37	● Magnesium - 2 modules	10	5 723 89	● Champagne - 2 modules
5	5 720 08	Intermediate switch ○ White - 1 module	10	5 723 88	● Soft Alu - 2 modules
5	5 725 08	● Magnesium - 1 module	5	5 720 13	1-way double pole switch ○ White - 1 module
5	5 700 08	● Champagne - 1 module	5	5 725 13	● Magnesium - 1 module
5	5 710 08	● Soft Alu - 1 module	5	5 721 83	● Champagne - 1 module
10	5 720 38	○ White - 2 modules	5	5 721 82	● Soft Alu - 1 module
10	5 725 38	● Magnesium - 2 modules	5	5 724 51	● Red - 1 module
10	5 721 66	● Champagne - 2 modules	10	5 720 46	○ White - 2 modules
10	5 721 65	● Soft Alu - 2 modules	10	5 725 46	● Magnesium - 2 modules
10	5 720 40	Double pole switch ○ White - 2 modules	10	5 721 85	● Champagne - 2 modules
5	5 725 40	● Magnesium - 2 modules	10	5 721 84	● Soft Alu - 2 modules
5	5 721 79	● Champagne - 2 modules			
5	5 721 78	● Soft Alu - 2 modules			

Support frames and plates, p. 39 and 48-49



Arteor™ mechanical switches

square version (continued)



5 720 49

Support frame and plate selection charts p. 48-49

Mechanisms supplied with rocker plates, to be equipped with support frames (p. 39) and plates (p. 48-49)

Pack Cat.Nos Switches 20 AX - 250 V~ (continued)

Pack	Cat.Nos	Switches 20 AX - 250 V~ (continued)
5	5 720 14	1-way double pole switch with indicator Red LED supplied ○ White - 1 module ● Magnesium - 1 module ● Champagne - 1 module ● Soft Alu - 1 module
5	5 725 14	
5	5 721 87	
5	5 721 86	
10	5 720 47	
10	5 725 47	○ White - 2 modules ● Magnesium - 2 modules ● Champagne - 2 modules ● Soft Alu - 2 modules
10	5 721 89	
10	5 721 88	
10	5 720 49	
10	5 725 49	
10	5 721 91	1-way double pole switch with indicator and "WATER HEATER" marking Red LED supplied ○ White - 2 modules ● Magnesium - 2 modules ● Champagne - 2 modules ● Soft Alu - 2 modules
10	5 721 90	
10	5 720 48	
10	5 725 48	
10	5 721 93	
10	5 721 92	2-way double pole switch ○ White - 2 modules ● Magnesium - 2 modules ● Champagne - 2 modules ● Soft Alu - 2 modules

Arteor™ push-buttons

square version



5 700 00

5 710 00

5 720 15

5 725 16

5 725 33

Support frame and plate selection charts p. 48-49

Mechanisms supplied with rocker plates, to be equipped with support frames (p. 39) and plates (p. 48-49)

Pack Cat.Nos Push-buttons 6 A - 250 V~

Pack	Cat.Nos	Push-buttons 6 A - 250 V~
10	5 720 00	1-way push-button ○ White - 1 module ● Magnesium - 1 module ● Champagne - 1 module ● Soft Alu - 1 module
10	5 725 00	
10	5 700 00	
10	5 710 00	
10	5 720 30	
10	5 725 30	○ White - 2 modules ● Magnesium - 2 modules ● Champagne - 2 modules ● Soft Alu - 2 modules
10	5 730 35	
10	5 730 34	
5	5 720 15	
5	5 725 15	
5	5 730 37	1-way push-button with bell symbol ○ White - 1 module ● Magnesium - 1 module ● Champagne - 1 module ● Soft Alu - 1 module
5	5 730 36	
5	5 720 56	
5	5 725 56	
5	5 730 39	
5	5 730 38	○ White - 2 modules ● Magnesium - 2 modules ● Champagne - 2 modules ● Soft Alu - 2 modules
5	5 720 16	
5	5 725 16	
5	5 730 41	
5	5 730 40	
10	5 720 01	1-way push-button with locator and bell symbol Equipped with blue LED ○ White - 1 module ● Magnesium - 1 module ● Champagne - 1 module ● Soft Alu - 1 module
5	5 725 01	
5	5 730 43	
5	5 730 42	
10	5 720 31	
5	5 725 31	2-way push-button ○ White - 1 module ● Magnesium - 1 module ● Champagne - 1 module ● Soft Alu - 1 module
5	5 730 45	
5	5 730 44	
10	5 720 32	
5	5 725 32	
5	5 730 49	○ White - 2 modules ● Magnesium - 2 modules ● Champagne - 2 modules ● Soft Alu - 2 modules
5	5 730 48	
10	5 720 02	
10	5 725 02	
10	5 730 47	
10	5 730 46	2-way push-button with locator Equipped with blue LED ○ White - 1 module ● Magnesium - 1 module ● Champagne - 1 module ● Soft Alu - 1 module
10	5 720 32	
5	5 725 32	
5	5 730 49	
5	5 730 48	
10	5 720 03	2-way push-button with label-holder ○ White - 1 module ● Magnesium - 1 module
5	5 725 03	
10	5 720 33	
10	5 725 33	
10	5 700 33	
10	5 710 33	○ White - 2 modules ● Magnesium - 2 modules ● Champagne - 2 modules ● Soft Alu - 2 modules



5 743 37



5 743 20



5 740 09A



5 740 47A

 Support frame and plate selection charts p. 48-49
 Load selection charts p. 22

Mechanisms supplied with rocker plates, to be equipped with support frames (p. 39) and plates (p. 48-49)

Pack	Cat.Nos	Contactless switch for lighting
1	5 743 34	2 modules Allows to control light sources by simply passing the hand in front of the switch Detection distance 6 cm LED indicator light, activated by default (can be switched off) Mechanism depth 20 mm, compatible with all types of flush-mounting boxes 2 possibilities of cabling: • With neutral, 3 wires Accepted power by lamp type: - LEDs and CFL lamps: 200 W LED - Incandescent and halogen lamps: 200 W - LEDs, CFLs, halogen lamps, fluorescent tubes with ferromagnetic or electronic transformer: 200 VA • Without neutral, 2 wires Accepted power by lamp type: - LEDs and CFL lamps: 5 to 200 W LED - Incandescent and halogen lamps: 5 to 200 W - LEDs, CFLs, halogen lamps, fluorescent tubes with ferromagnetic or electronic transformer: 5 to 200 VA • 4 modes available: - 1-way switch mode: wiring with or without neutral - 2-way switch mode: wiring with neutral mandatory - Master/Slave mode: wiring with neutral mandatory, 3 slaves max. - Push-button mode: wiring with neutral mandatory, for controlling relays or a «with Netatmo» micromodule <ul style="list-style-type: none"> ○ White ● Magnesium ● Champagne ● Soft Alu
1	5 743 37	
1	5 743 36	
1	5 743 35	

Pack	Cat.Nos	Contactless switch for doors, electric and electromagnetic door locks
1	5 743 20	2 modules Allows to control door opening by simply passing the hand in front of the switch Detection distance adjustable from 10 cm (default setting) to 30 cm LED indicator light, activated by default (can be switched off) Mechanism depth 25 mm, compatible with all types of flush-mounting boxes Power supply 12 - 24 - 48 V= Available modes : Steady mode/pulse mode (by default mode) - NC/NO mode (by default mode) <ul style="list-style-type: none"> ○ White

Pack	Cat.Nos	Motion sensors
1	5 740 09A	Compatible with any type of lamp IR detection, detection field 170° Detection range 8 m Time delay setting from 5 s to 30 min Light level threshold setting from 5 to 1275 lux 4 levels of sensitivity setting Installation in box min. depth 30 mm 2 modules Motion sensor, 2 wires, without neutral Standby consumption: < 0.01 W Accepted power by lamp type: - LEDs and CFL lamps: 2 to 100 W LED - Halogen and incandescent: 2 to 150 W - LEDs, CFLs, halogen, fluorescent tube with ferromagnetic or electronic transformer : 2 to 150 VA If several sensors are installed on the same circuit, the minimum load changes: refer to the technical sheet Possibility to install up to 3 sensors in parallel Additional remote manual control possible with push-button, 10 max. Can be associated with a modular time-lag switch Cat.Nos 4 126 02 or 0 047 04 Accepted power by lamp type will be power of the time-lag switch used <ul style="list-style-type: none"> ○ White ● Magnesium
1	5 740 59A	
1	5 740 47A	Motion sensor, 3 wires, with neutral Standby consumption: < 0.015 W Accepted power by lamp type: - LEDs and CFL lamps: 0 to 500 W LED - Halogen and incandescent: 0 to 2000 W - LEDs, CFLs, halogen, fluorescent tube with ferromagnetic or electronic transformer: 0 to 1000 VA Possibility to install up to 10 sensors in parallel Additional remote manual control possible with push-button, 10 max. Master/Slave function available (10 slaves max. for 1 master) <ul style="list-style-type: none"> ○ White ● Magnesium ● Champagne ● Soft Alu
1	5 740 97A	
1	5 741 41A	
1	5 741 40A	
1	0 401 49	Active power bleeder Makes 2-wire electronic lighting control units without neutral compatible with all commercially-available loads (LED, compact fluorescent, ELV halogen with ferromagnetic or electronic ballast, 230 V halogen, fluorescent tube, incandescent) Consumption 0.4 W

Arteor™

dimmers



5 727 13



5 735 01



5 722 39A

Support frame and plate selection charts p. 48-49
Load selection charts p. 22

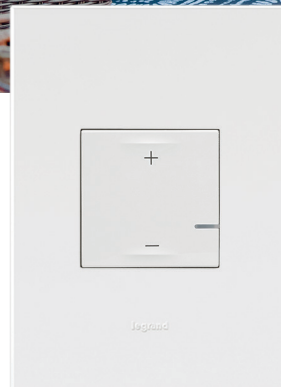
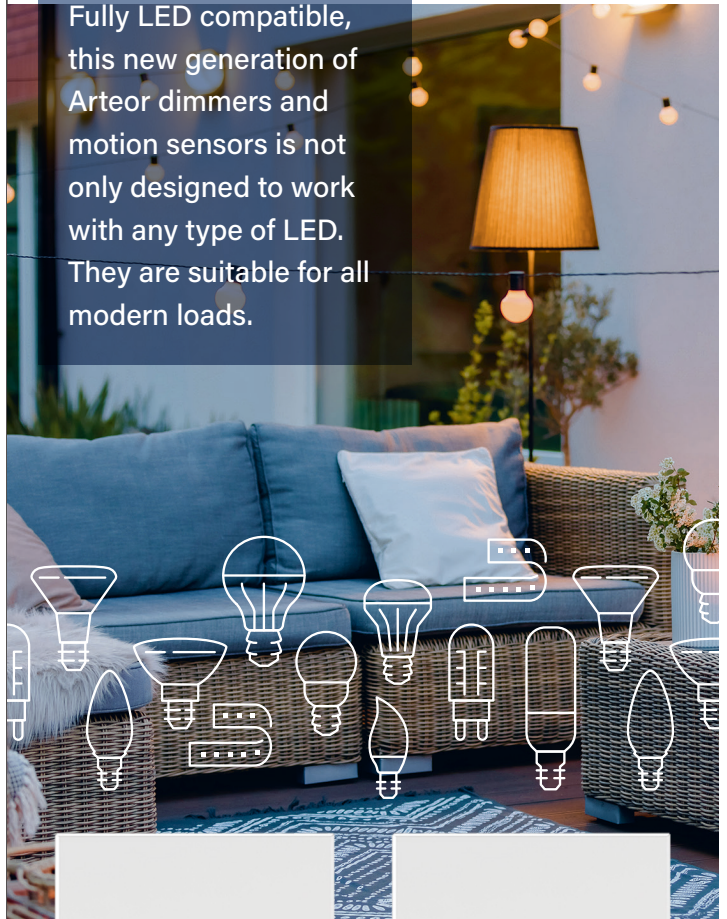
Mechanisms supplied with rocker plates, to be equipped with support frames (p. 39) and plates (p. 48-49)

Pack	Cat.Nos	Leading edge dimmers
1	5 722 13	Without neutral, 2-wire 2 modules Rotary dimmer - 400 W <ul style="list-style-type: none"> ○ White ● Magnesium ● Champagne ● Soft Alu
1	5 727 13	
1	5 700 53	
1	5 710 53	
1	5 735 01	Rotary dimmer - 1000 W To be installed alone in a 3 module box (or 1-gang BS) with a 3-module support frame and a 2-module plate For lamps: - 60-1000 W (230 V) - 60-500 W (127 V) for incandescent and halogen lamps - 60-600 VA (230 V) - 60-300 VA (127 V) for halogen lamps with electronic transformer with leading edge behaviour - 60-1000 VA (230 V) - 60-500 VA (127 V) for halogen lamps with ferromagnetic transformers <ul style="list-style-type: none"> ○ White ● Magnesium
1	5 737 01	
1	5 722 39A	Dimmers for all dimmable loads Can be associated with one or several push-buttons without neon, for ON/OFF or dimming control Memory level function: lights come on again at the same lighting level as before they were last switched OFF Depth 35 mm Standby consumption < 5 mW 2 modules Push-button dimmer without neutral, 2 wires For ON/OFF and dimming control of all types of lamps: - Dimmable LEDs and CFL lamps: 3 to 125 W LED (10 lamps max.) - Halogen and incandescent 230 V~ : 3 to 125 W - LEDs, CFLs, halogen lamps, fluorescent tubes with ferromagnetic or electronic transformer: 3 to 125 VA <ul style="list-style-type: none"> ○ White ● Magnesium ● Champagne ● Soft Alu
1	5 727 39A	
1	5 729 37A	
1	5 729 36A	
1	5 741 89A	Push-button dimmer with neutral, 3 wires For ON/OFF and dimming control of all types of lamps: - Dimmable LEDs and CFL lamps: 0 to 150 W LED (15 lamps max.) - Halogen and incandescent 230 V~ : 0 to 150 W - LEDs, CFLs, halogen lamps, fluorescent tubes with ferromagnetic or electronic transformer: 0 to 150 VA <ul style="list-style-type: none"> ○ White ● Magnesium ● Champagne ● Soft Alu
1	5 741 90A	
1	5 741 91A	
1	5 741 88A	
1	5 722 38	Dimmers 1-10 V Push-button dimmer for ballasts 1-10 V 2 modules <ul style="list-style-type: none"> ○ White ● Magnesium ● Champagne ● Soft Alu
1	5 727 38	
1	5 729 39	
1	5 729 38	

NEW DIMMERS & MOTION SENSORS

LED there be light

Fully LED compatible, this new generation of Arteor dimmers and motion sensors is not only designed to work with any type of LED. They are suitable for all modern loads.



Dimmers for all dimmable loads

- Available with or without neutral
- Suitable for all kinds of dimmable LEDs and modern loads

Motion sensors

- Available with or without neutral
- Compatible with all types of LEDs
- Reduced depth 25 mm for easy installation

Arteor™ load selection charts

Load selection charts

	Cat.Nos	Type of cabling	Universal					
			LEDs and CFLs		Halogen/Incandescent lamps		LEDs, CFLs, halogen, fluorescent tube with ferromagnetic or electronic transformer	
			110V~	240V~	110V~	240V~	110V~	240V~
Contactless switch for lighting	5 743 34	With Neutral	100 VA	200 VA	100 W	200 W	100 VA	200 VA
		Without Neutral	5 - 100 VA	5 - 200 VA	5 - 100 W	5 - 200 W	5 - 100 VA	5 - 200 VA
	5 743 37	With Neutral	100 VA	200 VA	100 W	200 W	100 VA	200 VA
		Without Neutral	5 - 100 VA	5 - 200 VA	5 - 100 W	5 - 200 W	5 - 100 VA	5 - 200 VA
	5 743 36	With Neutral	100 VA	200 VA	100 W	200 W	100 VA	200 VA
		Without Neutral	5 - 100 VA	5 - 200 VA	5 - 100 W	5 - 200 W	5 - 100 VA	5 - 200 VA
	5 743 35	With Neutral	100 VA	200 VA	100 W	200 W	100 VA	200 VA
		Without Neutral	5 - 100 VA	5 - 200 VA	5 - 100 W	5 - 200 W	5 - 100 VA	5 - 200 VA

	Cat.Nos	LEDs and CFLs		Halogen/Incandescent lamps		LEDs, CFLs, halogen, fluorescent tube with ferromagnetic or electronic transformer		
		110V~	230V~	110V~	230V~	110V~	230V~	
		Motion sensors	Without Neutral	5 740 09A				
5 740 59A	2 - 50 VA			2 - 100 VA	2 - 50 W	2 - 150 W	2 - 75 VA	2 - 150 VA
With Neutral	5 740 47A							
	5 740 97A		0 - 250 VA	0 - 500 VA	0 - 1000 W	0 - 2000 W	0 - 500 VA	0 - 1000 VA
	5 741 41A							
	5 741 40A							

	Cat.Nos	Dimmable LEDs and CFLs		Halogen/Incandescent lamps		Halogen and fluorescent tube with ferromagnetic transformer		LEDs, CFLs, halogen, and fluorescent tube with electronic transformer		
		110V~	230V~	110V~	230V~	110V~	230V~	110V~	230V~	
		Dimmers for all dimmable loads	Without Neutral	5 722 39A						
5 727 39A										
5 729 37A	3 - 75 VA			3 - 125 VA	3 - 75 W	3 - 125 W	3 - 75 VA	3 - 125 VA	3 - 75 VA	3 - 125 VA
5 729 36A										
With Neutral	5 741 89A									
	5 741 90A		0 - 75 VA	0 - 150 VA	0 - 75 W	0 - 150 W	0 - 75 VA	0 - 150 VA	0 - 75 VA	0 - 150 VA

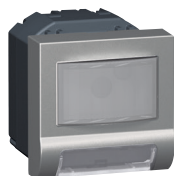
	Cat.Nos	Halogen/Incandescent lamps		Halogen with ferromagnetic transformer		Halogen with electronic transformer		
		110V~	240V~	110V~	240V~	110V~	240V~	
		Rotary dimmers	Without Neutral	5 722 13				
5 727 13	20 - 200 W			40 - 400 W	20 - 200 VA	40 - 400 VA	-	-
5 700 53								
5 710 53								
5 735 01	60 - 500 W			60 - 1000 W	60 - 500 VA	60 - 1000 VA	60 - 300 VA	60 - 600 VA
5 737 01								
Dimmers 1 - 10 V	With Neutral	5 722 38						
		5 727 38	-	-	-	-	20 - 300 VA	20 - 600 VA
		5 729 39						
		5 729 38						

Arteor™

visual indication



5 722 21



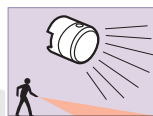
5 727 26



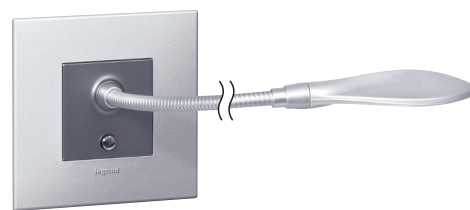
5 724 52



5 722 67



Lamp used as a torch



5 727 57 + plate 5 713 02



Support frame and plate selection charts p. 48-49

Mechanisms supplied with square rocker plates, to be equipped with support frames (p. 39) and plates (p. 48-49)

Pack	Cat.Nos	Skirting lights
		For installation close to obstacles 2 modules
		Standard
		With LED 230 V~ - 0.2 or 1 W
1	5 722 21	○ White
1	5 740 82	● Magnesium
1	5 740 83	● Champagne
1	5 740 80	● Soft Alu
		With motion detector 100-240 V~ With IR detection cell and LED When a person passes, the mechanism detects the presence and lights the obstacle The function is equipped with an audible signal that can be disengaged
1	5 722 26	○ White
1	5 727 26	● Magnesium
1	5 729 45	● Champagne
1	5 729 44	● Soft Alu
		Self-contained plug-in lights 230 V~ power supply In the event of a mains failure, the lamp lights up automatically When removed from its socket, the lamp lights up automatically and can be used as a torch (with O/I button) Lamp can be removed simply by pushing Standby power: 24 hrs in use
1	5 722 67	○ Transparent

Pack	Cat.Nos	Reading lights
		Fitted with maintenance-free LEDs LED colours: 3000 K (neutral white) 230 V~ power supply - energy class A Screw terminals For installation in the bedhead Offers directional lighting Equipped with a flexible cable so the head can swivel Built-in dimmer Consumption 3.3 W Luminous flux 110 lumen (equivalent to 15 W incandescent) Service life 40000 hours For installation in box depth 40 mm min. 2 modules
1	5 722 57	○ White
1	5 727 57	● Magnesium

Pack	Cat.Nos	Illuminated lighting unit
		230 V~ - 1 W Supplied with 4 coloured labels 1 module
10	5 724 52	○ White

Pack	Cat.Nos	Overdoor lighting units
		Supplied with diffusers and LED 2 modules
10	5 724 53	○ White with red diffuser
10	5 722 23	○ White with white diffuser

Pack	Cat.Nos	Lamps
		For locator switch LED 230 V - blue
10	5 724 56	
		For indicator switch LED 230 V - red LED 24 V - red LED 12 V - red
10	5 724 55	
10	5 724 57	
10	5 724 54	



Support frame and plate selection charts p. 48-49

Mechanisms supplied with square rocker plates, to be equipped with support frames (p. 39) and plates (p. 48-49)

Pack	Cat.Nos	Thermostats
1	5 722 03	Electronic room thermostat Control knob with index and adjustable segments for min. and max. settings Adjustable range from 5 °C to 30 °C (+/- 0.5 °C) Power supply: 230 V~ - 50/60 Hz One potential free changeover contact output Suitable for controlling heated ceilings and underfloor heating - LV use breaking capacity: 8 A - 250 V~ - resistive inductive circuit 2 A - 250 V~ - inductive circuit - ELV use breaking capacity: 12 to 48 V~ - 12 to 24 V=, from 1 mA min. to 500 mA max. 2 modules <ul style="list-style-type: none"> ○ White ● Magnesium ● Champagne ● Soft Alu
1	5 727 03	
1	5 727 06	
1	5 727 05	
1	5 722 63	Thermostat for electric floor heating With one potential free N/O contact and LED 16 A - 230 V~ Adjustable range from 7 °C to 40 °C 2 modules <ul style="list-style-type: none"> ○ White ● Magnesium ● Champagne ● Soft Alu
1	5 727 63	
1	5 727 08	
1	5 727 07	

Pack	Cat.Nos	Fan controllers
1	5 722 17	2 modules AC speed control - 4 positions <ul style="list-style-type: none"> ○ White ● Magnesium ● Champagne ● Soft Alu
1	5 727 17	
1	5 727 87	
1	5 727 86	
1	5 722 18	Rotary speed controller for fan Operates 40 to 400 VA limit switch For progressive speed control of ceiling fan <ul style="list-style-type: none"> ○ White ● Magnesium ● Champagne ● Soft Alu
1	5 727 18	
1	5 727 97	
1	5 727 96	
5	5 722 15	Fan step regulator - 100 W <ul style="list-style-type: none"> ○ White ● Magnesium ● Champagne ● Soft Alu
5	5 727 15	
5	5 727 99	
5	5 727 98	
5	5 722 02	Curtain switches 1 module Curtain switch centre off <ul style="list-style-type: none"> ○ White ● Magnesium ● Champagne ● Soft Alu
5	5 727 02	
5	5 700 52	
5	5 710 52	
5	5 722 01	Curtain switch centre retract Push-button action <ul style="list-style-type: none"> ○ White ● Magnesium ● Champagne ● Soft Alu
5	5 727 01	
5	5 727 55	
5	5 727 54	
10	5 722 19	Electric roller blind controllers - 250 V~ For control via automatic box (N/O mechanism) Double push-button - 10 A 2 modules <ul style="list-style-type: none"> ○ White ● Magnesium ● Champagne ● Soft Alu
10	5 727 19	
10	5 729 43	
10	5 729 42	
10	5 722 20	For direct control of a motor (mechanism with fixed positions) Double push-button - 10 A 2 modules <ul style="list-style-type: none"> ○ White ● Magnesium ● Champagne ● Soft Alu
10	5 727 20	
10	5 700 54	
10	5 710 54	

Arteor™

RCBO and MCB



5 723 60





5 723 61



Support frame and plate selection charts p. 48-49

Mechanisms supplied with square rocker plates, to be equipped with support frames (p. 39) and plates (p. 48-49)

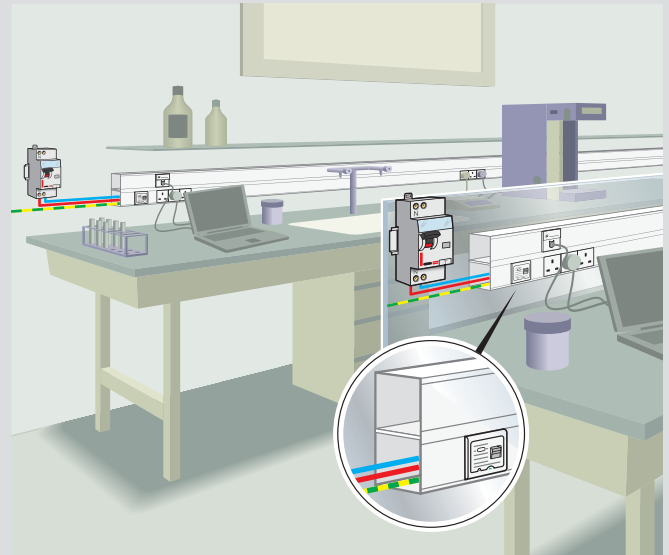
Pack	Cat.Nos	RCBO - 16 A - 230 V~
1	5 723 60	<p>Single pole + Neutral - 30 mA - 2 modules The RCBO is used to protect people (premises with a conductive floor, presence of water, etc...) against direct contact with live parts or leakages to earth With test button ○ White</p> 
1	5 723 61	<p>Thermal magnetic proximity MCB Single pole + Neutral - 230 V~ - 16 A Used for local protection of part in a circuit (e.g. 2P+E socket) against overloads and short-circuits Main protection being close to the user plus discriminating allows immediate reset Can also be used as a local consumption limiter (depending on its rating) Breaking capacity: 3000 A - 2 modules ○ White</p> 

Arteor™

proximity MCBs

Example of use of an RCBO

For use in addition to a DIN rail mounting RCBO
 In the event of a fault, allows the user to reset the RCBO locally (on the work surface), without interrupting service to another group of sockets
 • 30 mA sensitivity ensures the safety of persons



Selectivity

Downstream MCBs	RCBOs or upstream MCBs	DX ³ 10000 - 10 kA DX ³ 10000 - 16 kA / 1P, 2P, 3P, 4P curve C						
		16 A	20 A	25 A	32 A	40 A	50 A	63 A
Arteor 1P+N MCB and RCBO	10 A	120	150	187	240	300	375	472
	16 A	-	150	187	240	300	375	472

Downstream MCBs	RCBOs or upstream MCBs	DX ³ 10000 - 16 kA (80 to 125 A) DX ³ 25 kA, 36 kA, 50 kA curve C									
		16 A	20 A	25 A	32 A	40 A	50 A	63 A	80 A	100 A	125 A
Arteor 1P+N MCB and RCBO	10 A	120	150	210	500	700	1000	1800	3000	5000	T
	16 A		150	187	300	500	700	1300	2000	3600	5500



Support frame and plate selection charts p. 48-49

Mechanisms supplied with rocker plates, to be equipped with support frames (p. 39) and plates (p. 48-49)
Conform to IEC 62684

Pack	Cat.Nos	USB Type-A chargers
		Consumption in passive mode < 0.1 W For charging of smartphones, tablets and powerbanks Single USB sockets - 1 x Type-A - 5 V _{DC} - 3 A - 15 W 1 module - compact format for space gain
10	5 716 80	<ul style="list-style-type: none"> ○ White ● Magnesium ● Champagne ● Soft Alu
10	5 716 81	
10	5 716 82	
10	5 716 83	
		Double USB sockets - 2 x Type-A - 5 V _{DC} - 3 A - 15 W For charging up to two portable devices 1 module - compact format for space gain
10	5 716 84	<ul style="list-style-type: none"> ○ White ● Magnesium ● Champagne ● Soft Alu
10	5 716 85	
10	5 716 86	
10	5 716 87	
		Double USB sockets - 2 x Type-A - 5 V _{DC} - 3 A - 15 W 2 modules
5	5 720 78	<ul style="list-style-type: none"> ○ White ● Magnesium ● Champagne ● Soft Alu
1	5 725 78	
1	5 710 76	
1	5 700 76	

Pack	Cat.Nos	USB Type-C chargers (continued)
		For charging of up to two portable devices (smartphones, tablets, powerbanks) Double USB sockets - 2 x Type-C - 5 V _{DC} - 3 A - 15 W Consumption in passive mode < 0.07 W 2 modules
1	5 720 72	<ul style="list-style-type: none"> ○ White ● Magnesium ● Champagne ● Soft Alu
1	5 725 72	
1	5 710 78	
1	5 700 78	
		USB Type-C chargers - Fast charge
		Fast charge feature: Power Delivery Single USB sockets - 1 x Type-C 20 W For fast charging of smartphones, tablets, powerbanks Consumption in passive mode < 0.05 W 1 module - compact format for space gain
10	5 716 96	<ul style="list-style-type: none"> ○ White ● Magnesium ● Champagne ● Soft Alu
10	5 716 97	
10	5 716 98	
10	5 716 99	

Pack	Cat.Nos	USB Type-A + USB Type-C chargers
		For charging of up to two portable devices (smartphones, tablets, powerbanks) Double USB sockets - Type-A + Type-C - 5 V _{DC} - 3 A - 15 W Consumption in passive mode < 0.1 W 1 module - compact format for space gain
10	5 716 88	<ul style="list-style-type: none"> ○ White ● Magnesium ● Champagne ● Soft Alu
10	5 716 89	
10	5 716 90	
10	5 716 91	
		Double USB sockets - Type-A + Type-C - 5 V _{DC} - 3 A - 15 W Consumption in passive mode < 0.07 W 2 modules
1	5 720 77	<ul style="list-style-type: none"> ○ White ● Magnesium ● Champagne ● Soft Alu
1	5 725 77	
1	5 710 77	
1	5 700 77	

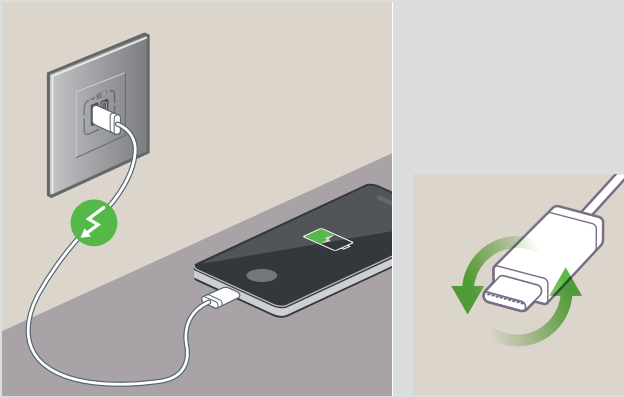
Pack	Cat.Nos	USB Type-C chargers
		For charging of up to two portable devices (smartphones, tablets, powerbanks) Double USB sockets - 2 x Type-C - 5 V _{DC} - 3 A - 15 W Consumption in passive mode < 0.1 W 1 module - compact format for space gain
10	5 716 92	<ul style="list-style-type: none"> ○ White ● Magnesium ● Champagne ● Soft Alu
10	5 716 93	
10	5 716 94	
10	5 716 95	

Arteor™

Type-C connectivity

What is USB Type-C ?

The USB Type-C connector is the new standard adopted by mobile terminals for charging and data. It is compatible with all major brands of portable devices (Apple, Samsung, LG, Huawei, Google, Sony, etc.)

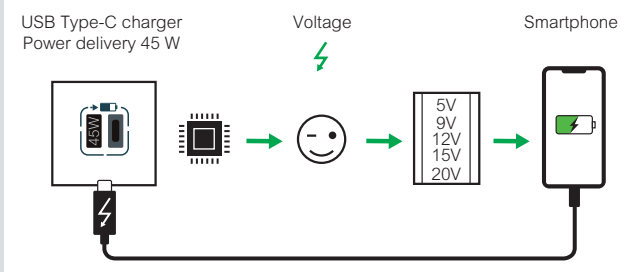


Why USB Type-C ?

- To charge faster than with the USB Type-A connector
- To reduce charging time in Power Delivery mode (booster)
- To make life easier for users with a single reversible cord
- To accompany the change of all multimedia terminals (laptops, tablets, phones)

How to charge all your terminals faster ?

When using a USB Type-C Power Delivery wall charger, the terminal (e.g. smartphone) queries the charger and selects the most suitable voltage for its battery in order to optimize charging time while ensuring the safety of both user and battery



For charging while travelling

Provides extra energy in passage/transit areas



Waiting area (train station, airport, bar, restaurant...)

With a Power Delivery charger

- 50% charge reached in less than 30 minutes
- 80% charge reached in 1 hour
- 50% time saving compared to a 5 W charger

Recommendations:

- Faster charging in OFF mode
- Faster charging in ON mode: decrease brightness <50%

Wall-mounted USB chargers help to reduce e-waste

Remember that 50 million tons of electronic waste are produced each year in Europe, whereas the aim is carbon neutrality

Wall-mounted USB chargers can be shared and are never forgotten (examples: hotels, holidays, office)

New smartphones (Apple, Samsung) are now delivered without mobile charger and are USB Type-C Power Delivery compatible

USB Type-C standardization drastically limits the diversity of cords required between multimedia terminals for the exchange of data and for charging

For charging in working places

Facilitates access to charge points
Saves the user having to carry his mobile charger along
Allows having more connection points available



Office or meeting rooms

Arteor™

lighting control, emergency push-buttons



5 720 55



5 723 63



Support frame and plate selection charts p. 48-49

Mechanisms supplied with rocker plates, to be equipped with support frames (p. 39) and plates (p. 48-49)

Pack	Cat.Nos	Time delay switches
		Interference suppression conforming to standard EN 55022 For timer control of a circuit with the following loads: - 1000 W incandescent and halogen 230 V~ - 2300 W resistive (heating) - 400 VA fluorescent and ELV halogen Adjustable from 25 s to 15 min It is possible to install a number of timer switches in parallel on the same circuit With integrated LED 2-wire installation in box min. depth 40 mm 2 modules
1	5 720 55	<ul style="list-style-type: none"> ○ White ● Magnesium ● Champagne ● Soft Alu
1	5 740 84	
1	5 741 38	
1	5 741 37	

		Single pole latching relays 10 A - 250 V~ Used to bring functions with low breaking capacity close to the application - Resistive: 3000 W - Incandescent: 1800 W - LV halogen: 1800 W - Fluorescent: 400 VA - Motors (roller blind type): 530 W 2 modules
1	5 722 27	<ul style="list-style-type: none"> ○ White ● Magnesium ● Champagne ● Soft Alu
1	5 727 27	
1	5 729 47	
1	5 729 46	

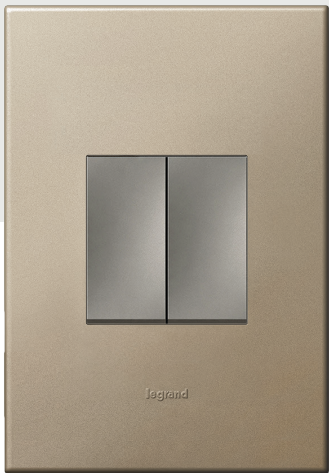
		Emergency stop mushroom head push-buttons 10 A - 250 V~ N/O + N/C 2 modules With key Unlock with RONIS key no. 601
1	5 723 63	<ul style="list-style-type: none"> ● Yellow/red
1	5 723 62	<ul style="list-style-type: none"> ● Yellow/red

ARTEOR™

Spoilt for choice

Arteor, the universal range of wiring devices, sets high standards in terms of design, functionality, versatility and ease of use.

From regular to high-end residential buildings, hotels and commercial premises: Arteor is the ideal choice for every kind of building, wherever in the world.



A collection of masterpieces

Arteor provides six collections of plate finishes, from the Neutral series to high-end metal finishes. For perfect integration into any modern environment.

6 collections of plate finishes





5 710 41



5 724 63



5 700 21

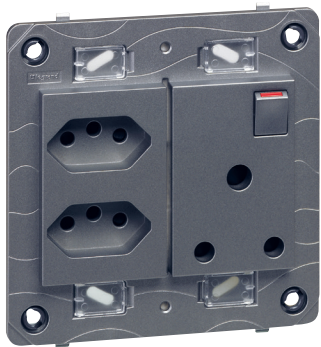


Support frame and plate selection charts p. 48-49

Pack	Cat.Nos	German standard socket outlets 16 A
		2 modules
10	5 721 18	2P+E shuttered for child safety <ul style="list-style-type: none"> ○ White ● Magnesium ● Champagne ● Soft Alu ● Dedicated green ● Dedicated orange
10	5 726 18	
10	5 700 41	
10	5 710 41	
10	5 724 62	
10	5 724 60	
		2P+E tamperproof, shuttered for child safety Used to identify a mains circuit (e.g. inverter) and avoid connection of unnecessary equipment which may cause interference on the circuit To be used with tamperproof insert Cat.No 0 502 99 (see below)
10	5 724 63	● Red tamperproof
		2P+E with cover
10	5 721 19	<ul style="list-style-type: none"> ○ White ● Magnesium ● Champagne ● Soft Alu
10	5 726 19	
10	5 710 19	
10	5 700 19	
Pack	Cat.Nos	French standard socket outlets 10/16 A
		2 modules
10	5 720 20	2P shuttered for child safety <ul style="list-style-type: none"> ○ White ● Magnesium ● Champagne ● Soft Alu
10	5 725 20	
10	5 710 86	
10	5 710 85	
10	5 720 21	2P+E shuttered for child safety <ul style="list-style-type: none"> ○ White ● Magnesium ● Champagne ● Soft Alu
10	5 725 21	
10	5 700 21	
10	5 710 21	
		2P+E tamperproof Used to identify a mains circuit (e.g. inverter) and avoid connection of unnecessary equipment which may cause interference on the circuit
10	5 724 66	● Red
		Tamperproof insert for Cat.Nos 5 724 66 and 5 724 63
10	0 502 99	Tamperproof insert for socket Fits directly into the plug

Arteor™

South African socket outlets



5 725 66



5 721 32


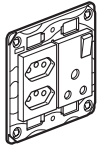

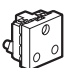
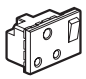
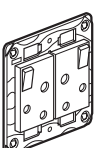


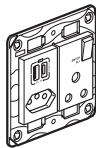
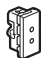
5 720 70 + plate 5 753 00



5 721 00

Support frame and plate selection charts p. 48-49

Pack	Cat.Nos	South African type socket outlets - 16 A
10	5 721 36	<p>2P+E unswitched - 1 module Conform to SANS 164-2 Mechanisms supplied with rocker plates, to be equipped with support frames (p. 39) and plates (p. 48-49)</p>  <ul style="list-style-type: none"> ○ White ● Magnesium ● Champagne ● Soft Alu
10	5 726 36	
10	5 726 48	
10	5 721 48	
1	5 720 66	<p>2 new RSA socket outlets (164-2) and 1 old RSA switched socket outlet (164-1) Prewired, monobloc, 4x4 Supplied with support frame and rocker plate, to be equipped with 2x3 modules plate</p>  <ul style="list-style-type: none"> ○ White ● Magnesium ● Champagne ● Soft Alu
1	5 725 66	
1	5 710 92	
1	5 700 90	
10	5 721 22	<p>2P+E - shuttered for child safety - 2 modules Mechanisms to be equipped with support frames (p. 39) and plates (p. 48-49)</p>  <ul style="list-style-type: none"> ○ White ● Magnesium ● Champagne ● Soft Alu ● Red
10	5 726 22	
10	5 724 26	
10	5 724 25	
10	5 724 61	
10	5 722 95	<p>164-1 flush socket 2P+E - shuttered for child safety - 2 modules Satisfies aesthetic requirements of installation within cluster or pop-up box solutions</p>  <ul style="list-style-type: none"> ○ White ● Magnesium ● Champagne ● Soft Alu
10	5 722 96	
10	5 722 97	
10	5 722 98	
5	5 721 32	<p>2P+E switched - shuttered for child safety - 3 modules Mechanisms supplied with rocker plates, to be equipped with support frames (p. 39) and plates (p. 48-49)</p>  <ul style="list-style-type: none"> ○ White ● Magnesium ● Champagne ● Soft Alu ● Red dedicated
5	5 726 32	
5	5 724 28	
5	5 724 27	
5	5 724 65	
1	5 720 22	<p>2 x 2P+E switched - pre-wired - 2-gang Supplied with support frame and rocker plate, to be equipped with 2x3 modules plate</p>  <ul style="list-style-type: none"> ○ White ● Magnesium ● Champagne ● Soft Alu
1	5 725 22	
1	5 700 22	
1	5 710 22	

Pack	Cat.Nos	South African type socket outlets - 16 A with USB charger
1	5 720 70	<p>All switched new RSA socket outlet (164-2) and old RSA socket outlet (164-1) Prewired, monobloc, 4x4 Supplied with support frame and rocker plate, to be equipped with 2x3 modules plate USB Type-A + Type-C, 3 A - 5 V_{DC} - 15 W Consumption of USB in passive mode < 0,08 W (when switched) The main switch controls the two RSA socket outlets and the double USB charger</p>  <ul style="list-style-type: none"> ○ White ● Magnesium ● Champagne ● Soft Alu
1	5 725 70	
1	5 710 93	
1	5 700 91	
10	5 721 00	<p>ELV socket outlets 3 A 2P Mechanisms supplied with rocker plates, to be equipped with support frames (p. 39) and plates (p. 48-49) 12 mm fixing centres for plug Cat.No 0 500 05 1 module</p>  <ul style="list-style-type: none"> ○ White ● Magnesium
10	5 726 00	
20	0 500 05	<p>Plug 2P - 3 A for ELV socket outlet 12 mm fixing centres pins Ø3.6 mm</p>

Arteor™ telephone sockets



Support frame and plate selection charts p. 48-49

Mechanisms supplied with rocker plates, to be equipped with support frames (p. 39) and plates (p. 48-49)

Pack	Cat.Nos	RJ 11 and RJ 12 sockets
		Equipped with modular Jack connector with 1/4 turn terminal for fast connection (possible looping)
		RJ 11 - 1 module 4 contacts
10	5 723 00	○ White
10	5 728 00	● Magnesium
10	5 700 56	● Champagne
10	5 710 56	● Soft Alu
		RJ 11 - 2 modules 4 contacts
10	5 723 13	○ White
10	5 728 13	● Magnesium
10	5 726 83	● Champagne
10	5 726 82	● Soft Alu
		RJ 12 - 2 modules 6 contacts
10	5 723 12	○ White
10	5 728 12	● Magnesium
10	5 726 85	● Champagne
10	5 726 84	● Soft Alu

Pack	Cat.Nos	Telephone sockets
		With IDC connection Conform to British Telecom
		Single master - 2 modules
10	5 723 10	○ White
10	5 728 10	● Magnesium
10	5 726 87	● Champagne
10	5 726 86	● Soft Alu
		Single secondary - 1 module
5	5 723 01	○ White
5	5 728 01	● Magnesium
5	5 726 89	● Champagne
5	5 726 88	● Soft Alu

Arteor™ television sockets



Support frame and plate selection charts p. 48-49

Mechanisms supplied with rocker plates, to be equipped with support frames (p. 39) and plates (p. 48-49)

For Dvbt, Cablecast and satellite installation
UHD TV quality compatible
Classe A shielded star socket LTE ready (4G protected)
Recommended coaxial cable: 17 VATCA
Star cabling (1 socket = 1 cable to antenna, splitter or multiswitch)
Visual check of the connection
Meets EN 50083-4 and EN 50083-2 European directive

Pack	Cat.Nos	Multi TV star sockets
		TV-R-SAT sockets DAB+
		Low attenuation: 1.5 dB 2 modules
10	5 721 72	○ White
10	5 726 72	● Magnesium
10	5 726 91	● Champagne
10	5 726 90	● Soft Alu
		TV-R-SAT-SAT sockets In1: TV-R-SAT1 / In2: SAT2 Low attenuation: 1.5 dB 2 modules
10	5 721 69	○ White
10	5 726 69	● Magnesium
10	5 726 93	● Champagne
10	5 726 92	● Soft Alu
		TV-SAT sockets 1 module
10	5 721 67	○ White
10	5 726 67	● Magnesium
10	5 726 95	● Champagne
10	5 726 94	● Soft Alu
		Single TV star sockets - 1 module
		Low attenuation 1dB 1 module
		TV 9.5 mm male sockets
10	5 721 71	○ White
10	5 726 71	● Magnesium
10	5 700 51	● Champagne
10	5 710 51	● Soft Alu
		TV "F" type sockets
10	5 721 63	○ White
10	5 726 63	● Magnesium
10	5 700 50	● Champagne
10	5 710 50	● Soft Alu

Arteor™

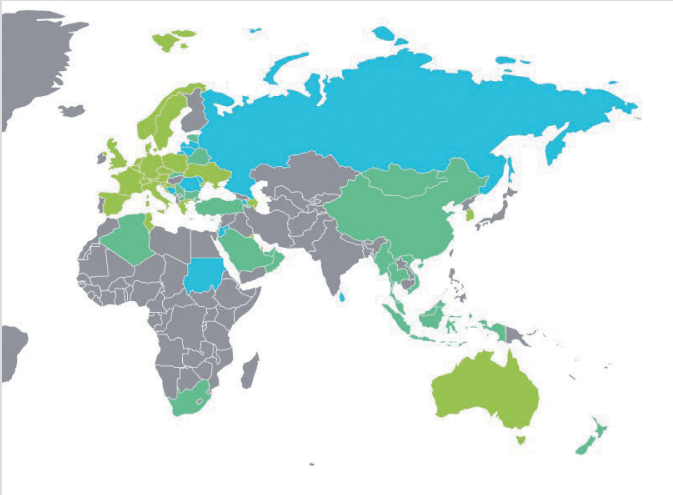
television sockets

Information about DAB+

Digital Audio Broadcasting is the radio equivalent of DTT, a global standard used all over the world.

- More radio stations available
- Better sound quality
- Digital data combined with the audio stream
- This socket has a reception range of radio DAB+ 87.5 - 240 MHz
- A link to a collective or individual aerial
- Digital quality

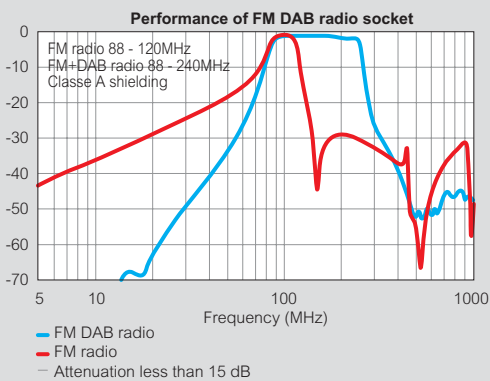
Roll-out in 2022



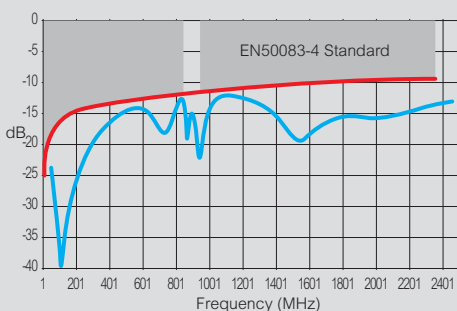
Source: WorldDAB

- Countries with regular services
- Countries with trials and/or regulation
- Countries with interest

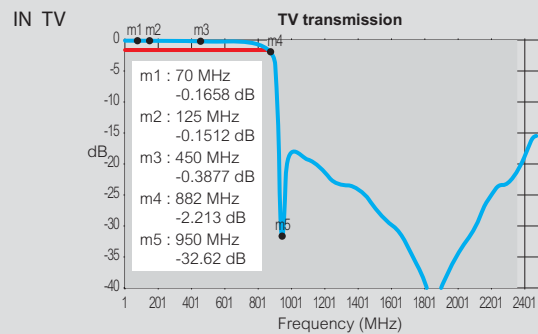
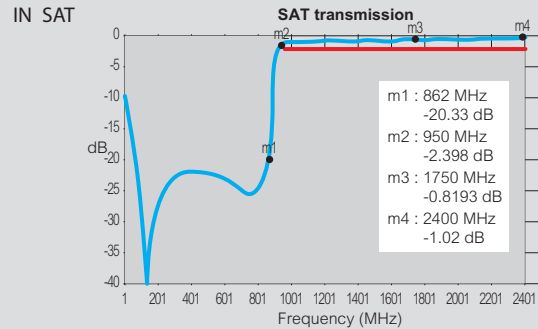
High performance



Return loss input



Coupling attenuation



Certification

Class A sockets, protected with LTE block filter. LTE protection is needed to prevent interference from new signals used by smartphones (3G, 4G, 5G). These undesirable signals can cause picture freezing or breaking up, and distorted sound. Legrand uses the PKM laboratory for Class A certification of its sockets.

Requirements for TV corner

- Multi-gang wiring accessories
- TV attenuation < 1,5 dB
- 17 VATC coaxial cable
- Cat. 6 twisted pairs
- Multi-operator, terrestrial DTT, satellite, cable network and ISP, FM and DAB+ radio reception



Internet connection



- Smart TV with interactive services
- Connected games console (for online gaming)



Support frame and plate selection charts p. 48-49

Can be integrated in any support
 Mechanisms supplied with rocker plates, to be equipped with support frames (p. 39) and plates (p. 48-49)
 Equipped with connectors with quick toolless connection
 Take single-core cables from AWG 22 up to AWG 26, and AWG 26 multicore cables
 T568A and B marking with colour codes
 Compliant with ISO/IEC 11 801, EN 50173 and ANSI/TIA 568 standards

Pack	Cat.Nos	Cat. 6A sockets	Pack	Cat.Nos	Cat. 6 sockets
		360° metal shielding			UTP - 1 module
		STP - 1 module	10	5 723 02	○ White
10	5 723 06	○ White	10	5 728 02	● Magnesium
10	5 728 06	● Magnesium	10	5 700 57	● Champagne
10	5 728 46	● Champagne	10	5 710 57	● Soft Alu
10	5 728 45	● Soft Alu	10	5 723 54	○ White with orange shutter
10	5 723 51	○ White with orange shutter	10	5 728 54	● Magnesium with orange shutter
10	5 728 51	● Magnesium with orange shutter	10	5 728 74	● Champagne with orange shutter
10	5 728 48	● Champagne with orange shutter	10	5 728 73	● Soft Alu with orange shutter
10	5 728 47	● Soft Alu with orange shutter	10	5 723 55	○ White with green shutter
10	5 723 52	○ White with green shutter	10	5 728 55	● Magnesium with green shutter
10	5 728 52	● Magnesium with green shutter	10	5 728 80	● Champagne with green shutter
10	5 728 61	● Champagne with green shutter	10	5 728 79	● Soft Alu with green shutter
10	5 728 60	● Soft Alu with green shutter			UTP - 2 modules
		STP with controlled access - 2 modules	10	5 723 14	○ White - square version
		Supplied with 2 keys for 5 sockets	10	5 728 14	● Magnesium - square version
5	5 723 50	○ White with red shutter	10	5 700 59	● Champagne - square version
5	5 728 50	● Magnesium with red shutter	10	5 710 59	● Soft Alu - square version
5	5 728 63	● Champagne with red shutter			UTP with controlled access - 2 modules
5	5 728 62	● Soft Alu with red shutter			Supplied with 2 keys for 5 sockets
		UTP - 1 module	5	5 723 53	○ White with red shutter
10	5 723 49	○ White	5	5 728 53	● Magnesium with red shutter
10	5 728 49	● Magnesium	5	5 728 87	● Champagne with red shutter
10	5 728 65	● Champagne	5	5 728 86	● Soft Alu with red shutter
10	5 728 64	● Soft Alu			UTP with retractable cord - 4 modules
10	5 723 58	○ White with orange shutter			Cord (0.9 m) winds up automatically with a pushbutton
10	5 728 58	● Magnesium with orange shutter	1	5 723 39	○ White
10	5 728 69	● Champagne with orange shutter	1	5 728 39	● Magnesium
10	5 728 68	● Soft Alu with orange shutter	1	5 728 89	● Champagne
10	5 723 59	○ White with green shutter	1	5 728 88	● Soft Alu
10	5 728 59	● Magnesium with green shutter			FTP - 1 module
10	5 728 67	● Champagne with green shutter	10	5 723 22	○ White
10	5 728 66	● Soft Alu with green shutter	10	5 728 22	● Magnesium
		UTP with controlled access - 2 modules	10	5 728 91	● Champagne
		Supplied with 2 keys for 5 sockets	10	5 728 90	● Soft Alu
5	5 723 57	○ White with red shutter			FTP - 2 modules
5	5 728 57	● Magnesium with red shutter	10	5 723 16	○ White
5	5 728 72	● Champagne with red shutter	10	5 728 16	● Magnesium
5	5 728 71	● Soft Alu with red shutter	10	5 728 93	● Champagne
			10	5 728 92	● Soft Alu
					STP shielded - 1 module
			10	5 723 23	○ White
			10	5 728 23	● Magnesium
			10	5 728 95	● Champagne
			10	5 728 94	● Soft Alu
					STP shielded - 2 modules
			10	5 723 17	○ White
			10	5 728 17	● Magnesium
			10	5 728 97	● Champagne
			10	5 728 96	● Soft Alu

Arteor™

RJ 45 sockets (continued)



5 723 15

Support frame and plate selection charts p. 48-49

Can be integrated in any support
 Mechanisms supplied with rocker plates, to be equipped with support frames (p. 39) and plates (p. 48-49)
 Equipped with connectors with quick toolless connection
 Take single-core cables from AWG 22 up to AWG 26, and AWG 26 multicore cables
 T568A and B marking with colour codes
 Compliant with ISO/IEC 11 801, EN 50173 and ANSI/TIA 568 standards

Pack	Cat.Nos	Cat. 5e sockets
10	5 723 03	UTP - 1 module ○ White ● Magnesium ● Champagne ● Soft Alu
10	5 728 03	
10	5 700 58	
10	5 710 58	
10	5 723 15	UTP - 2 modules ○ White ● Magnesium ● Champagne ● Soft Alu
10	5 728 15	
10	5 728 99	
10	5 728 98	
10	5 723 04	FTP - 1 module ○ White ● Magnesium ● Champagne ● Soft Alu
10	5 728 04	
10	5 729 08	
10	5 729 07	

Arteor™

rear pluggable data sockets



5 723 31

5 728 32

5 723 36

5 728 35

Support frame and plate selection charts p. 48-49

Mechanisms supplied with rocker plates, to be equipped with support frames (p. 39) and plates (p. 48-49)

Pack	Cat.Nos	Rear pluggable RJ 45 sockets
		Certified as conforming to standards ISO 11801 ed. 2.0, EN 50173-1 and EIA/TIA 568 Contacts marked with 568 A and B dual colour code and numbers Connectors with self-stripping terminals Possibility of re-wiring in the event of error Multidirectional cable entry For use with area distribution boxes connection to boxes via RJ 45-RJ 45 dedicated cords Used to create cat. 6 and cat. 5e links in accordance with standards 2 modules
		Cat. 6 - UTP
10	5 723 31	○ White ● Magnesium ● Champagne ● Soft Alu
10	5 728 31	
10	5 729 10	
10	5 729 09	
		Cat. 6 - FTP
10	5 723 33	○ White ● Magnesium ● Champagne ● Soft Alu
10	5 728 33	
10	5 729 12	
10	5 729 11	
		Cat. 5e - UTP
10	5 723 30	○ White ● Magnesium ● Champagne ● Soft Alu
10	5 728 30	
10	5 729 18	
10	5 729 17	
		Cat. 5e - FTP
10	5 723 32	○ White ● Magnesium ● Champagne ● Soft Alu
10	5 728 32	
10	5 729 20	
10	5 729 19	

Arteor™

adaptors for data sockets



5 723 37



5 728 37



Support frame and plate selection charts p. 48-49

Mechanisms supplied with rocker plates, to be equipped with support frames (p. 39) and plates (p. 48-49)

Adaptors for Keystone data sockets

Pack	Cat.Nos	
10	5 723 37	<ul style="list-style-type: none"> ○ White ● Magnesium ● Champagne ● Soft Alu
10	5 728 37	
10	5 729 32	
10	5 729 31	



Adaptors for Systimax data sockets

Pack	Cat.Nos	
10	5 723 38	<ul style="list-style-type: none"> ○ White ● Magnesium ● Champagne ● Soft Alu
10	5 728 38	
10	5 729 34	
10	5 729 33	



Arteor™

USB data sockets



5 720 94

5 727 75



5 720 23



Support frame and plate selection charts p. 48-49

Mechanisms supplied with rocker plates, to be equipped with support frames (p. 39) and plates (p. 48-49)

USB data sockets for data transfer

Pack	Cat.Nos	
		Used to bring connections closer to the user For connecting USB devices (interactive white board, scanner-printer, external hard disk) Preterminated - USB 2.0 - 1 module Maximum length: 5 m Recommended cable: USB A Equipped with a 15 cm cord
1	5 720 94	<ul style="list-style-type: none"> ○ White ● Magnesium ● Champagne ● Soft Alu
1	5 725 94	
1	5 725 76	
1	5 725 75	
		Connection via screw terminals - USB 2.0 1 module Maximum length: 5 m Recommended cable: USB A Cross-section 1 mm ²
1	5 722 75	<ul style="list-style-type: none"> ○ White ● Magnesium ● Champagne ● Soft Alu
1	5 727 75	
1	5 725 53	
1	5 725 52	
		USB Data extender Used to bring connections closer to the user in case of large distances. For connecting USB devices (digital school board / interactive whiteboard...) located more than 5 m away (30 m max.) from a source (computer...) The kit includes - a transmitter (1 module) - a receiver (1 module) The link between the transmitter and the receiver is made via a RJ 45/RJ 45 cord
1	5 720 23	<ul style="list-style-type: none"> ○ White

Arteor™

audio and video sockets



Support frame and plate selection charts p. 48-49

Mechanisms supplied with rocker plates, to be equipped with support frames (p. 39) and plates (p. 48-49)

Pack	Cat.Nos	HDMI type A sockets
		Used to transmit high-definition digital audio/video streams between a source (Blu-ray player, computer) and a compatible receiver (TV, videoprojector...)
		Preterminated sockets HDMI 1.4 - 1 module Equipped with cord, length 15 cm
1	5 720 96	<ul style="list-style-type: none"> ○ White ● Magnesium ● Champagne ● Soft Alu
1	5 725 96	
1	5 725 18	
1	5 725 17	
		Preterminated sockets HDMI 1.4 - 2 modules Equipped with cord, length 15 cm
1	5 722 99	<ul style="list-style-type: none"> ○ White - square version ● Magnesium - square version ● Champagne - square version ● Soft Alu - square version
1	5 725 99	
1	5 723 46	
1	5 723 45	
		HDMI extender
1	0 517 38	<p>Extends HDMI audio/video signals up to 57 m at up to a 4 K resolution between a source (computer, Blu-ray player) and a receiver (videoprojector, TV) in a meeting room or classroom</p> <p>Kit includes both transmitter and receiver with link via a network cord RJ 45/RJ 45 (not supplied)</p> <p>Compatible with 3D video, 4K resolution, EDID passthrough and HDCP</p> <p>Including IR control</p> <p>Certified HD BaseT</p>
		Display port sockets
		Used to transmit high-definition digital audio/video streams between a source (laptop, computer, etc) and a compatible receiver (TV, videoprojector...)
		Preterminated socket - 1 module Equipped with cord, length 15 cm
1	5 720 90	<ul style="list-style-type: none"> ○ White ● Magnesium
1	5 725 90	

Pack	Cat.Nos	HD15 sockets
		Used to transmit analog video streams (VGA, XGA, UXGA depending on graphic card) between a source (computer) and a compatible receiver (LCD, video projector, TV, etc...)
		Preterminated sockets - 1 module Equipped with cord, length 15 cm
1	5 720 97	<ul style="list-style-type: none"> ○ White ● Magnesium
1	5 725 97	
		Screw-type female HD15 sockets - 2 modules
1	5 722 82	<ul style="list-style-type: none"> ○ White
		Screw-type female HD15 + 3.5 mm Jack sockets - 2 modules
1	5 722 88	<ul style="list-style-type: none"> ○ White ● Magnesium
1	5 727 88	



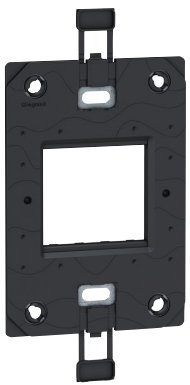
Support frame and plate selection charts p. 48-49

Mechanisms supplied with rocker plates, to be equipped with support frames (p. 39) and plates (p. 48-49)

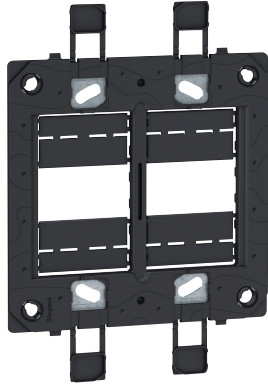
Pack	Cat.Nos	Jack sockets 3.5 mm	Pack	Cat.Nos	3-pole XLR sockets
		3.5 mm Jack connectors can be used to create audio links			For the stereo connection of any peripheral, microphone, mixing console
		Preterminated sockets - 1 module			Recommended cable: 1 audio pair 0.14 to 0.5 mm ² shielded
		Equipped with cord, length 15 cm			Max. cable length: 50 m (beyond this an audio amplifier is recommended)
1	5 720 91	○ White	1	5 722 83	2 modules
1	5 725 91	● Magnesium	1	5 727 83	XLR female
1	5 725 59	● Champagne	1	5 724 99	○ White
1	5 725 55	● Soft Alu	1	5 724 98	● Magnesium
		4 screw-type female 3.5 mm Jack socket - 1 module	1	5 724 99	● Champagne
1	5 722 74	○ White	1	5 724 98	● Soft Alu
1	5 727 74	● Magnesium			XLR male
1	5 724 91	● Champagne	1	5 722 77	○ White
1	5 724 90	● Soft Alu			
		Solder-type female 3.5 mm Jack socket - 1 module			Loudspeaker sockets
1	5 722 78	○ White			4 mm ² terminals
					1 module
			10	5 722 70	○ White
			10	5 727 70	● Magnesium
			10	5 726 97	● Champagne
			10	5 726 96	● Soft Alu
					2 modules
			10	5 722 80	○ White
			10	5 727 80	● Magnesium
			10	5 726 99	● Champagne
			10	5 726 98	● Soft Alu
					Attenuators
					100 V - 25 W
					Allow to adjust power to 25 W from a balanced 100 V loudspeaker line
					2 modules
			1	5 722 84	○ White
			1	5 727 84	● Magnesium
					Female BNC 75 sockets
					Provide the composite video link for any peripheral device such as a DVD drive, camera, video recorder, etc
					Connection on screw terminals - 1 module
			1	5 722 76	○ White
			1	5 727 76	● Magnesium

Arteor™

support frames



5 760 30



5 760 32



Plate selection charts p. 48-49

Pack	Cat.Nos	Support frames for US and South African type boxes 83.5 mm fixing centres
		Screw mounting For 2" x 4" boxes
10	5 760 30	For 2 modules (electronic functions except 2-module mechanisms to be mounted on 3-module support frame)
10	5 760 40	For 1 to 3 modules
5	5 760 31	For 4" x 4" boxes For 2, 3 and 4 modules
5	5 760 32	For 2 x 3 modules

Pack	Cat.Nos	Support frames for German and French type boxes
		Screw mounting
5	5 760 12	For 6 modules Horizontal mounting
2	5 760 22	For 2 x 6 modules Horizontal mounting

Arteor™

ancillary mechanisms



Support frame and plate selection charts p. 48-49

Mechanisms supplied with rocker plates, to be equipped with support frames (p. 39) and plates (p. 48-49)

Pack	Cat.Nos	Blank modules
10	5 723 41	1 module <ul style="list-style-type: none"> ○ White - square version ● Magnesium - square version ● Champagne - square version ● Soft Alu - square version
10	5 728 41	
10	5 700 60	
10	5 710 60	
10	5 710 60	
10	5 723 42	2 modules <ul style="list-style-type: none"> ○ White - square version ● Magnesium - square version ● Champagne - square version ● Soft Alu - square version
10	5 728 42	
10	5 700 61	
10	5 710 61	
5	5 723 43	3 modules <ul style="list-style-type: none"> ○ White - square version ● Magnesium - square version ● Champagne - square version ● Soft Alu - square version
5	5 728 43	
5	5 728 20	
5	5 728 19	
10	5 723 20	Cable outlets 20 A cable outlet for junction - 2 modules ○ White
5	5 723 21	45 A cable outlet - BS 1-gang Supplied with cover plate For flush-mounting back box to be min. 45 mm deep ○ White
10	5 723 07	Cord outlets 1 module with Ø8 mm entry ○ White
10	5 723 19	2 modules ○ White

Arteor™

blinking cover plates



Support frame and plate selection charts p. 48-49

To be equipped with support frames (p. 39) and plates (p. 48-49)

Pack	Cat.Nos	British standard blanking cover plates
5	5 751 30	For 1-gang box <ul style="list-style-type: none"> ○ White ● Soft Alu ● Graphite ● Magnesium ● Champagne ● Dark Bronze
5	5 716 08	
5	5 751 32	
5	5 716 10	
5	5 716 12	
5	5 716 14	
5	5 751 40	For 2-gang box <ul style="list-style-type: none"> ○ White ● Soft Alu ● Graphite ● Magnesium ● Champagne ● Dark Bronze
5	5 716 09	
5	5 751 42	
5	5 716 11	
5	5 716 13	
5	5 716 15	
10	5 754 10	Italian/US standard blanking cover plates For 2" x 4" boxes <ul style="list-style-type: none"> ○ White ● Soft Alu ● Graphite ● Magnesium ● Champagne ● Dark Bronze
10	5 714 10	
10	5 754 12	
10	5 714 52	
10	5 714 53	
10	5 714 51	
5	5 753 60	US standard blanking cover plates For 4" x 4" boxes <ul style="list-style-type: none"> ○ White ● Soft Alu ● Graphite ● Champagne
5	5 714 00	
5	5 753 62	
5	5 753 64	

Arteor™

mounting supports, special plates and mounting boxes



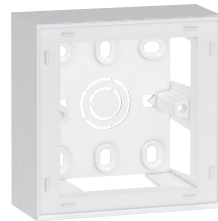
5 760 16



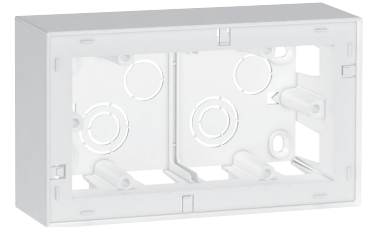
5 754 50



5 751 90



5 723 90



5 723 92



Support frame and plate selection charts p. 48-49

Pack	Cat.Nos	Panel mounting supports
10	5 760 15	For 1 to 3 mm thick panels For 1 module Clips into a 28 x 53.5 mm aperture
10	5 760 16	For 2 modules Clips into a 58 x 53.5 mm aperture
Modular support		
10	5 760 13	For mounting 2-module mechanisms on symmetrical rail
Dedicated plates for trunking		
10	5 754 50	1-gang plate 2 modules (supplied with support frame)
5	5 754 60	2-gang plate 2 x 2 modules (supplied with support frame)
IP 44 plate		
5	5 751 90	For British and German standards For mounting in 1-gang box Support frame supplied

Pack	Cat.Nos	Flush-mounting boxes
1	6 890 36	For British standard 6 and 8-module plates and frames For 6 modules 211.4 x 75.7 x 50.8 mm
1	6 890 38	For 8 modules 231 x 75.7 x 50.8 mm
1	6 890 28	For 2 x 6 modules 212 x 143 x 42 mm
1	0 818 56	For 3 x 6 modules 212 x 212 x 42 mm
Surface-mounting boxes		
10	5 723 90	For British, German and French standard For 2 modules - 1-gang 38 mm depth
25	5 723 92	For 4 modules 2 x 2 modules - 2-gang 48 mm depth (suitable for shaver sockets)
2	5 723 96	For 2 x 6 modules 38 mm depth

ARTEOR™

Hotel equipment at its best

Legrand hotel solutions are designed to improve customer loyalty and to increase profit through added value services.



Call indicators



Bedside controls for lights and curtains, USB charging options



Key card switch

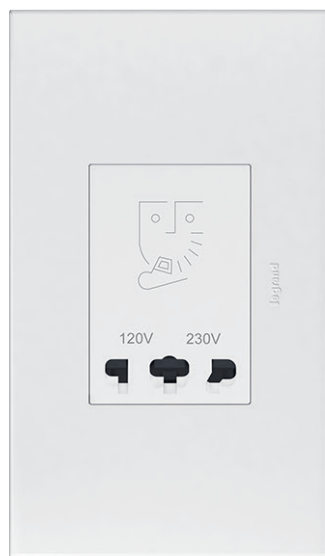




Arteor hotel equipment makes your guests feel at ease and at home - allowing for a personalised in-room experience and a consistently high service level.



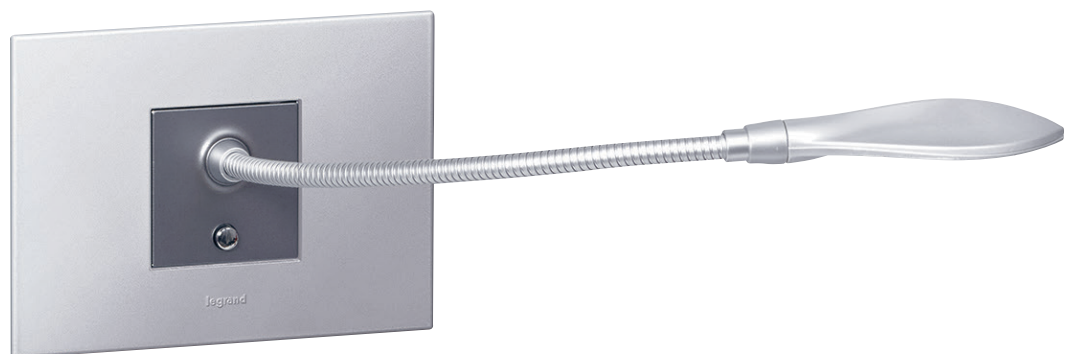
Illuminated sign



Shaver socket



Wireless charger



Reading light

Hotel equipment

lighting, electric roller blinds, curtain control - square version



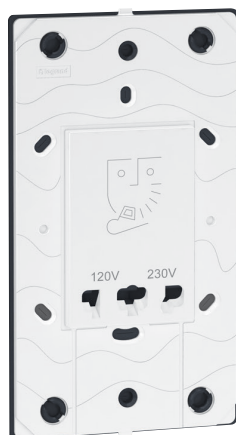
Support frame and plate selection charts p. 48-49

Mechanisms supplied with rocker plates, to be equipped with support frames (p. 39) and plates (p. 48-49)

Pack	Cat.Nos	Lighting control
10	5 732 84	Master switch - 2 modules 2-way double pole 20 AX - 250 V~ for general control: all ON / all OFF <ul style="list-style-type: none"> ○ White ● Magnesium ● Champagne ● Soft Alu
10	5 737 84	
10	5 737 89	
10	5 737 88	
10	5 732 86	Master push-button - 2 modules 2-way 6 A - 250 V~ for general control: all ON/ all OFF <ul style="list-style-type: none"> ○ White ● Magnesium ● Champagne ● Soft Alu
10	5 737 86	
10	5 737 99	
10	5 737 98	
10	5 732 94	Switch for bed lights - 2 x 1 module 2 x 2-way switch - 10 AX - 250 V~ <ul style="list-style-type: none"> ○ White ● Magnesium ● Champagne ● Soft Alu
5	5 737 94	
5	5 737 63	
5	5 737 62	
10	5 732 96	Push-button for bed lights - 2 x 1 module 2 x 2-way push-button - 6 A - 250 V~ <ul style="list-style-type: none"> ○ White ● Magnesium
5	5 737 96	
10	5 732 22	Electric roller blinds control - 250 VA Double switch 10 A - 2 modules For direct control of a motor (mechanism with fixed positions) <ul style="list-style-type: none"> ○ White ● Magnesium ● Champagne ● Soft Alu
10	5 737 22	
10	5 737 76	
10	5 737 75	
10	5 732 24	Double push-button 10 A - 2 modules For control via automatic box (N/O mechanism) <ul style="list-style-type: none"> ○ White ● Magnesium
10	5 737 24	
10	5 732 34	Curtain control - 250 VA Double switch 10 A - 2 modules For direct control of a motor (mechanism with fixed positions) <ul style="list-style-type: none"> ○ White ● Magnesium
10	5 737 34	
10	5 732 36	Double push-button 10 A - 2 modules For control via automatic box (N/O mechanism) <ul style="list-style-type: none"> ○ White ● Magnesium
10	5 737 36	

Hotel equipment

shaver sockets, key card switches, key cards, chimes, buzzers



5 721 53



5 710 55



5 722 53



0 767 11

Support frame and plate selection charts p. 48-49

Mechanisms supplied with rocker plates, to be equipped with support frames (p. 39) and plates (p. 48-49)

Pack	Cat.Nos	Shaver sockets
		<p>Conform to BS EN 61558-2-5. IP 24 For use with European, British, American, Australian 2-pin plugs. Screwless live and neutral terminals Double wound isolating transformer Automatic self-resetting overload feature Plug insertion operates micro-switch which energises transformer To be equipped with BS 2-gang - 3-module plates (p. 48-49) For flush-mounting boxes, use BS 2-gang box depth 48 mm, US type, Italian type boxes depth 48 mm or Cat.No 0 801 55 Power supply: 230 V - 50/60 Hz. 3 modules 230 V / 120-230 V</p>
1	5 721 55	<ul style="list-style-type: none"> ○ White ● Magnesium ● Champagne ● Soft Alu ○ White - with earth connector ● Magnesium - with earth connector ● Champagne - with earth connector ● Soft Alu - with earth connector
1	5 726 55	
1	5 726 66	
1	5 726 65	
1	5 721 53	
1	5 726 53	
1	5 727 64	
1	5 727 62	

Pack	Cat.Nos	Mechanical key card switches 230 V
		<p>For energizing a circuit by inserting a key fob Cat.No 5 722 59 or a smart card (access card for a hotel room) Example of use: hotel room power supply only when guest is present Time-delay of approx. 30 sec. after card removal To be equipped with single pole latching relay Cat.Nos 5 722 27 or 5 727 27 2 modules</p>
1	5 722 30	<ul style="list-style-type: none"> ○ White ● Magnesium ● Champagne ● Soft Alu
1	5 727 30	
1	5 700 55	
1	5 710 55	

Pack	Cat.Nos	Key card switches RFID
		<p>For energizing a circuit for example meeting room, office, hotel room... Works only with ISO type contactless key card Cat.No 0 767 11 or other ISO type 13.56 MHz key card Time-delay of approx. 30 sec. after card removal Low capacity contact 230 V - 30 VA Lighting of the slot by LED. 2 modules</p>
1	5 722 53	<ul style="list-style-type: none"> ○ White ● Magnesium ● Champagne ● Soft Alu
1	5 727 53	
1	5 727 37	
1	5 722 37	

Pack	Cat.Nos	Key cards
		<p>For mechanical key card switches Enable use of key fob switches in hotels with key locks Supplied complete with a label holder for individual hotel identification</p>
10	5 722 59	<ul style="list-style-type: none"> ○ White ● Magnesium
10	5 727 59	
10	0 767 11	<p>For RFID key card switches MIFARE contactless badge card ISO format (50 x 80 mm) Chip: 13.56 MHz Standard 1 KB memory</p>
		<p>Chimes 230 V - 50 Hz Consumption: 65 mA 1 melody Tone level: 73 dB at 1 m Compatible with push-button Cat.No 0 416 45</p>
1	5 722 06	<ul style="list-style-type: none"> ○ White ● Magnesium
1	5 722 46	

Pack	Cat.Nos	Buzzers
		<p>230 V - 1 module</p>
10	5 722 04	<ul style="list-style-type: none"> ○ White ● Magnesium
5	5 727 04	
		<p>230 V - 2 modules</p>
10	5 722 07	<ul style="list-style-type: none"> ○ White ● Magnesium
10	5 722 47	

Hotel equipment

call indicators, illuminated signs, reading light - square version



Support frame and plate selection charts p. 48-49

Mechanisms supplied with rocker plates, to be equipped with support frames (p. 39) and plates (p. 48-49)

Pack	Cat.Nos	Hotel bedroom call indicators
		<p>Enable the resident to inform hotel staff of the room status Two settings are possible: - Do not disturb - Please clean the room 2 x 1 module</p> <p>Indicator for corridor Indicator lamp and bell push Installed in the corridor, display calls Supplied with LED</p>
5	5 720 57	<ul style="list-style-type: none"> ○ White ● Magnesium ● Champagne ● Soft Alu
5	5 725 57	
5	5 737 78	
5	5 737 77	
		<p>Internal control unit Allows the user to select the desired setting Supplied with LED</p>
5	5 720 54	<ul style="list-style-type: none"> ○ White ● Magnesium ● Champagne ● Soft Alu
5	5 725 54	
5	5 737 82	
5	5 737 81	
		<p>Illuminated signs</p> <p>Mechanisms integrating LEDs and a pivoting window that can take customised labels (printed using a simple text editor on transparent printing paper) 2 modules</p> <p>Green or red LEDs Sign with 2-state LEDs with choice of green or red configurable on the mechanism. Power level: 1 W</p>
5	5 722 24	<ul style="list-style-type: none"> ○ White ● Magnesium ● Champagne ● Soft Alu
5	5 727 24	
5	5 727 46	
5	5 727 45	
		<p>Blue LEDs Sign with blue LEDs A choice of 2 power levels: 0.2 or 1 W</p>
5	5 722 25	<ul style="list-style-type: none"> ○ White ● Magnesium ● Champagne ● Soft Alu
5	5 727 22	
5	5 727 48	
5	5 727 47	
		<p>Reading lights</p> <p>Fitted with maintenance-free LEDs LED colours: 3000 K (neutral white) 230 V~ power supply - energy class A Screw terminals. For installation in the bedhead Offers directional lighting. Equipped with a flexible cable so the head can swivel Built-in dimmer. Consumption 3.3 W Luminous flux 110 lumen (equivalent to 15 W incandescent) Service life 40000 hours. For installation in box depth 40 mm min. 2 modules</p>
1	5 722 57	<ul style="list-style-type: none"> ○ White ● Magnesium
1	5 727 57	

Arteor™


wireless power chargers




0 776 40L supplied with sticker

0 776 99L

Wireless power chargers for fast charging of a smartphone with a Qi receiver
 Power supply standby mode consumption < 0.07 %
 Conform to the Qi WPC standard (Wireless Power Consortium): certified for professional Qi 1.2.3 projects
 Conform to EN 62479 standard (EMF emissions)
 Conform to ICNIRP specifications (health protection)
 Do not interfere with other wireless signals (Zigbee, TNT, GSM, 4G, etc)

Pack	Cat.Nos	Qi wireless charger - for integration into furniture
1	0 776 40L	<p>Specially designed for mounting horizontally on furniture For meeting rooms, offices, public areas, etc 80 mm drilling diameter, Aluminium colour Extra-slim with thickness < 1.5 mm Supplied with identification sticker diameter 85/110 mm, 2.5 m cord, fixing base and cable ties 110-240 V universal power supply Plugs conforming to European, BS, US, Australian/Chinese standards To be installed using a hole saw diameter 80 mm (Cat.No 0 885 08)</p> <p>15 W - IP 44 / IK 08 charger</p> 

1	0 776 99L	<p>Flush-mounted wireless charger - for public areas</p> <p>10 W wireless charger Specially designed for public buildings, passageways or transit areas, swimming pools, etc. IK 08 - IP 66 - Class II SELV Comes with 2 induction antennae for fast smartphone charging Recognition area: 50 x 80 mm Plate at an angle of 10° with non-slip coating to hold the terminal safely in place during charging Screws onto flush-mounting box with 60 mm fixing centres, min. depth 40 mm, French, German or British standard Can also be fixed in at 4 points Can be mounted on rectangular boxes and outdoors 110/230 VA Phase + Neutral power supply Mechanism supplied with cover plate, attached with 2 Torx screws at the side</p> <p>● Aluminium colour Dimensions: 141 x 95 x 51 mm 2 x 2.5 mm² terminals</p> 
---	-----------	--

Arteor™

wireless power chargers

Wireless power charging

A Legrand innovation for easy charging

Using wireless energy transfer
 No need for cords and connectors

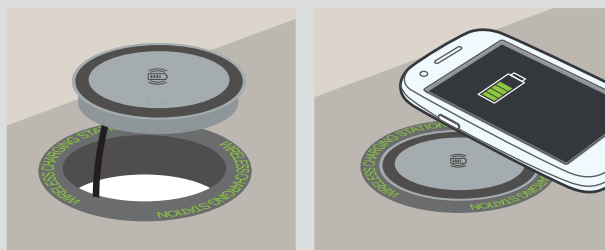
An open international standard:



Wireless Power Consortium: 750 members, ensuring interoperability with induction-compatible phones
 Qi: global standard adopted by vehicle manufacturers and cafés/hotels/restaurants
 Products certified for professional Qi 1.2.3 projects

Ergonomically designed to suit different environments

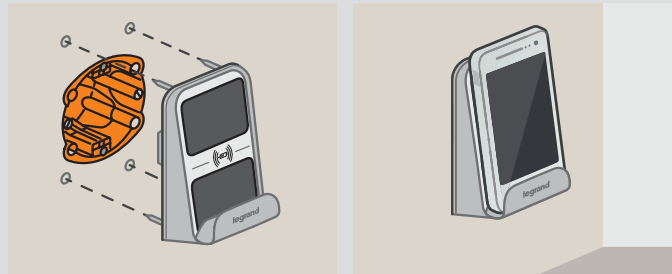
Horizontal charging on furniture



Insertion in an 80 mm diameter cut-out / Fixed into furniture
 External power supply with 2.5 m cord

Vertical charging on a wall in public areas (semi-flush-mounted)

Ideal for indoor or outdoor locations



Excellent resistance to impacts (IK 08) and adverse weather conditions (IP 66)
 Can be fixed directly on the flush-mounting box or for extra strength drilled with anchor bolts

Arteor™ African standard plate selection charts






83.5 mm fixing centres - flush-mounting boxes, support frames and plates

Number of modules per mechanism	Flush-mounting boxes	Support frames	Plates	PLATES						
				Neutral						
				White	Soft Alu	Graphite	Magnesium	Champagne	Dark Bronze	
SQUARE VERSION										
1 vertical module	2" x 4"	5 760 30		5 767 20	5 714 85	5 767 22	5 714 95	5 715 05	5 715 15	
1 horizontal module		5 760 40		5 752 40	5 714 81	5 752 42	5 714 91	5 715 01	5 715 11	
2 modules		5 760 30 ⁽¹⁾ 5 760 40		5 752 50	5 714 82	5 752 52	5 714 92	5 715 02	5 715 12	
3 modules		5 760 40		5 752 70	5 714 83	5 752 72	5 714 93	5 715 03	5 715 13	
2 modules	4" x 4"	5 760 31		5 752 60	5 714 86	5 752 62	5 714 96	5 715 06	5 715 16	
3 modules		5 760 31		5 752 80	5 714 87	5 752 82	5 714 97	5 715 07	5 715 17	
4 modules		5 760 31		5 752 90	5 714 84	5 752 92	5 714 94	5 715 04	5 715 14	
2 x 3 modules		5 760 32		5 753 00	5 714 88	5 753 02	5 714 98	5 715 08	5 715 18	
Shaver sockets	0 801 55	5 760 02		5 750 70	5 713 05	5 750 72	5 713 15	5 713 25	5 713 35	
6 modules	6 890 36	Supplied with support frame		5 753 70	5 713 06	5 753 72	5 713 16	5 713 26	5 713 36	
8 modules	6 890 38	Supplied with support frame		5 767 00	5 713 08	5 767 02	5 713 18	5 713 28	5 713 38	
2 x 6 modules	6 890 28	Supplied with support frame		5 753 90	5 716 00	5 753 92	5 716 02	5 716 04	5 716 06	
3 x 6 modules	0 818 56	Supplied with support frame		5 754 00	5 716 01	5 754 02	5 716 03	5 716 05	5 716 07	
Blanking cover plate Italian / US standards	2" x 4"	5 760 40		5 754 10	5 714 10	5 754 12	5 714 52	5 714 53	5 714 51	
Blanking cover plate US standard	4" x 4"	5 760 31		5 753 60	5 714 00	5 753 62	-	5 753 64	-	

PLATES

Mirror		Brushed Metal				Reflective Metal			Wood	Signature
Mirror White	Mirror Black	Stainless Steel	Gold Brass	Pink Champagne	Black	Stainless Steel	Black	Gold	Grey Oak	Cube
5 767 24	5 767 23	5 767 26	5 767 30	5 715 26	5 715 21	5 715 31	5 715 41	5 715 36	5 715 46	5 715 51
5 752 44	5 752 43	5 752 46	5 764 10	5 714 26	5 714 16	5 714 36	5 714 56	5 714 46	5 714 66	5 714 76
5 752 54	5 752 53	5 752 56	5 764 30	5 714 27	5 714 17	5 714 37	5 714 57	5 714 47	5 714 67	5 714 77
5 752 74	5 752 73	5 752 76	5 764 50	5 714 28	5 714 18	5 714 38	5 714 58	5 714 48	5 714 68	5 714 78
5 752 64	5 752 63	5 752 66	5 766 20	5 715 27	5 715 22	5 715 32	5 715 42	5 715 37	5 715 47	5 715 52
5 752 84	5 752 83	5 752 86	5 766 40	5 715 28	5 715 23	5 715 33	5 715 43	5 715 38	5 715 48	5 715 53
5 752 94	5 752 93	5 752 96	-	5 715 29	5 715 24	5 715 34	5 715 44	5 715 39	-	-
5 753 04	5 753 03	5 753 06	5 766 70	5 715 30	5 715 25	5 715 35	5 715 45	5 715 40	-	-
5 750 74	5 750 73	5 750 76	5 761 60	5 713 55	5 713 45	5 713 65	5 713 85	5 713 75	5 713 95	5 714 05
5 753 74	5 753 73	5 753 76	5 763 70	5 713 56	5 713 46	5 713 66	5 713 86	5 713 76	5 713 96	5 714 06
5 767 04	5 767 03	5 767 06	5 767 10	5 713 58	5 713 48	5 713 68	5 713 88	5 713 78	5 713 98	5 714 08
-	-	-	-	-	-	-	-	-	-	-
-	-	-	-	-	-	-	-	-	-	-
-	-	-	-	-	-	-	-	-	-	-
-	-	-	-	-	-	-	-	-	-	-

FOLLOW US ON

-  www.facebook.com/legrand.za
-  [@legrandsa](https://twitter.com/legrandsa)
-  www.linkedin.com/in/legrandsa
-  <https://za.pinterest.com/legrandsa>
-  [@legrand_south_africa](https://www.instagram.com/legrand_south_africa)



Legrand S.A

21 Spartan Crescent,
Eastgate, Ext 3
Sandton, 2054

Tel: +27 11 444 7971

Fax: +27 11 444 7980

Email: legrand.south.africa@legrand.co.za

www.legrand.co.za